



THANK YOU



YOUR SUPPORT HAS BEEN MAKING AN  
INCREDIBLE DIFFERENCE AT EMMA

YOU ARE A LIFELINE FOR STUDENTS NEEDING EXTRA SUPPORT



"I AM ENORMOUSLY GRATEFUL to the College for granting me a rent bursary. I needed an unfunded extension to my thesis submission date and was worried about how I would manage to finish my PhD without having to use up all my savings. The final stages of a PhD are stressful and uncertain, and the rent bursary provided me the security needed to be able to finish writing my thesis."

MUNGO AITKEN, PHD MATHS AND THEORETICAL PHYSICS

HERE ARE JUST A FEW EXAMPLES OF HOW YOU'VE HELPED STUDENTS THIS YEAR:

**£1500**

FOR A STUDENT CARE LEAVER  
EXPERIENCING HARDSHIP

**£850**

GIVEN IN RENT BURSARIES TO TWO  
FINAL-YEAR PHD STUDENTS

**£420**

FOR A COURSE OF THERAPY FOR A  
SPECIFIC CONDITION, COSTING  
£70 PER SESSION

**£200**

TO PURCHASE A REPLACEMENT  
LAPTOP BATTERY

"My Emmanuel education has shaped my life ever since. [...] I believe financial circumstances should never be the reason people miss out on this amazing opportunity." NEIL, 1989

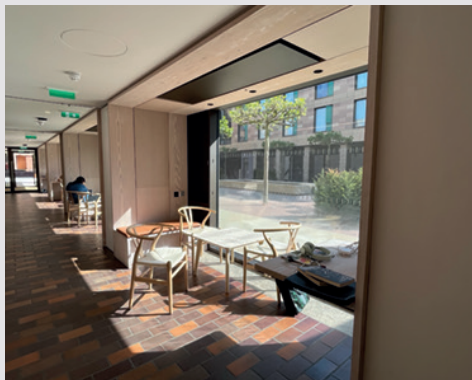
*I have set an Acorn which, when it becomes an Oak  
God alone knows what will be the fruit thereof*



**"EMMANUEL OFFERS SOMETHING unique and special. It's a life-changing opportunity and one that should be available to people from all backgrounds. Not just in academic terms but also in spirit. Living in college is vital to the experience of studying in Cambridge. I'm just glad that we have the chance to help that to happen for a few more people."** **EMMA ENABLES DONOR**



# YOU'VE HELPED US BUILD NEW SPACES THAT REFLECT THE SPIRIT OF EMMA



WE NOW HAVE FUNCTIONAL STUDY SPACES IN THE SOUTH COURT CORRIDOR (ABOVE), AND MORE SEMINAR ROOMS IN FURNESS LODGE. FURNESS LODGE ALSO HOUSES A NEW MCR (BELOW) THAT BETTER SUITS THE SIZE OF OUR GRADUATE COMMUNITY, NOW OVER 220 STUDENTS STRONG. THIS BRINGS THEM CLOSER TO THE HEART OF THE COLLEGE AND ENCOURAGES MORE INTEGRATION WITH THE REST OF THE EMMA COMMUNITY.

OUR NEW ACCOMMODATION (YOUNG'S COURT) HAS 48 ENSUITE STUDY BEDROOMS - WITH 3 ACCESSIBLE ROOMS - MAKING IT POSSIBLE FOR ALL OUR UNDERGRADUATES TO LIVE ON SITE FOR 3 YEARS. THEY'LL NOW BE ABLE TO PLAY A FULL PART IN EMMA'S SOCIAL AND INTELLECTUAL LIFE, AS WELL AS ACCESS OUR SUPPORT SERVICES - FROM IT TO WELLBEING - QUICKLY AND EASILY. PLUS, IN THE NEW KITCHENS, COUNTER HEIGHTS ARE FULLY ADJUSTABLE TO SUIT STUDENTS' NEEDS.



IN ADDITION TO *FIONA'S*, OUR THRIVING AND BUSY CAFÉ, OUR NEW SOCIAL SPACES INCLUDE A TRADITIONAL BAR (FAR LEFT), A 'LOUNGE' BAR (*MIKE'S* - NAMED AFTER OUR FORMER BURSAR), AND A BASEMENT EVENT SPACE (ABOVE RIGHT) WITH A POOL TABLE AND BOTTLE BAR. THE SPACES ARE FULLY ACCESSIBLE, AND FLEXIBLE TO BE USED TOGETHER OR SEPARATELY.

THANKS TO YOU, WE NOW HAVE:

**48**

NEW ENSUITE  
BEDROOMS

**3**

ACCESSIBLE  
BEDROOMS

**1**

ACCESSIBLE  
FELLOW'S SET

**3**

NEW SOCIAL SPACES  
AND 1 CAFÉ

## YOUR SUPPORT HAS LAUNCHED THE EMMA EXPERIENCE PROGRAMME

"HAVING RECENTLY PURSUED an MPhil and PhD in History elsewhere in Cambridge, it's been a wonderful privilege to be welcomed to Emmanuel. I love its enchanted gardens and vibrant scholarly community. As the first Director of the *Emma experience* programme, it's been rewarding to set up something new in an institution that, however storied, is open to trying new things and thinking about the challenges our members will face in the future.



"After a term of planning, the *Emma experience* pilot programme launched in Lent Term with a talk by Johnny Penn on 'AI and the Future'. There's now a website and a weekly email – The Acorn – signposting upcoming events and opportunities. These speak to the three priorities of the programme: developing work and life skills, improving wellbeing and fostering citizenship. We want to support our members to live successful and purposeful lives.

"The programme so far has included, for example, academic skills workshops, a panel on volunteering, and our first 'Finalists' Day', an opportunity to share practical advice on managing money, renting and thinking about purpose to our departing students.

"The response from our members has been very encouraging. After this successful pilot, we are now looking ahead to planning a fuller programme for the next academic year. Watch this space!"

DANIEL MCKAY, EMMA EXPERIENCE DIRECTOR

---

### THE EMMA EXPERIENCE SO FAR:



**The inaugural  
Women's  
Leadership  
Forum with a  
panel of Emma  
members**



**Lunchtime  
language tables  
(German,  
French, Spanish)**



**A fitness  
programme led  
by personal  
trainers**



**Masterclasses led  
by Emma members  
on interview  
skills and public  
speaking and  
managing stress  
and anxiety**

# EMMA+ EXPERIENCE

"I'M SO THANKFUL for my time at Emma. It was rich with opportunities for trial and error which in so many ways have shaped my life since. I'm glad to help others have their chance to learn and discover themselves in such an amazing setting." MARTIN, 1977

FIND OUT MORE ABOUT THE PROGRAMME AT [WWW.EMMAEXPERIENCE.UK](http://WWW.EMMAEXPERIENCE.UK)

## YOU'VE FUNDED A NEW OUTREACH ROLE AT EMMA

**YOUR EXTRAORDINARY GENEROSITY** in recent years has now allowed us to create and fund a new role: next academic year, we'll have an Outreach and Widening Participation Co-ordinator in post to work alongside our Schools Liaison Officer.

This new post will give us the capacity to fulfil our aim of building more sustained relationships with schools in our Link Areas, maximising the impact on pupils' aspirations. Studies show that the effects of the pandemic and cost-of-living crisis are widening the attainment gap between disadvantaged students and their peers. So, strengthening the impact of our access and outreach programme is more important than ever.



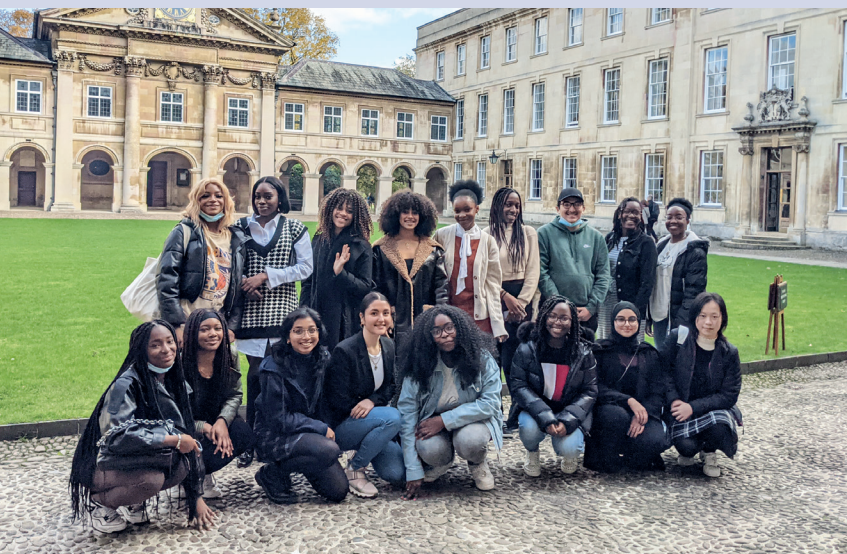
### DID YOU KNOW?

The Education Policy Institute (EPI) Annual Report 2020 found disadvantaged pupils in England are 18.1 months of learning behind their peers.

## ECSU BME SHADOWING SCHEME

**EARLIER THIS YEAR**, 13 Black and Minority Ethnic (BME) Year 11 students from Sheffield took part in the annual ECSU BME Shadowing Scheme. Mentored by undergraduate volunteers, over the four-week scheme the 'shadows':

- Selected 'subject streams', watching specially recorded lectures;
- Experienced a supervision delivered by Emma Fellows and PhD students;
- Developed study skills and knowledge of higher education and Cambridge.



At the end of the scheme, the 'shadows' and their parents and guardians were invited back to Emma for a celebration day.

"I **THOUGHT IT** was an amazing opportunity and have taken a lot away from it, after thinking I'd never apply to Cambridge I think it's fair to say I've changed my mind!"

FEEDBACK FROM A 'SHADOW'

YOU'VE HELPED US REACH NEARLY 15,000 SCHOOL PUPILS WITH OUR ACCESS INITIATIVES SINCE 2020

**2020-21**

**£48,696** SPENT

**4000** STUDENTS REACHED

**2021-22**

**c.£110,000** SPENT

**4700** STUDENTS REACHED

**2022-23**

**£75,372** SPENT

(AS OF JUNE 2023)

**5600** STUDENTS REACHED



# CELEBRATING *EMMA ENABLES*

## *EMMA ENABLES* IN NUMBERS

**£38 MILLION**

RAISED IN TOTAL

**£11 MILLION**

RAISED FOR PEOPLE,  
INCLUDING STUDENT SUPPORT

**3000 DONORS**

FROM 37 COUNTRIES

**A THIRD OF ALL MEMBERS  
HAVE DONATED**



ON 8 JULY, WE WELCOMED OVER 500 DONORS BACK TO EMMA TO CELEBRATE ALL YOU'VE HELPED US ACHIEVE THROUGH *EMMA ENABLES*. HIGHLIGHTS INCLUDED: GRADUATE STUDENTS TALKING ABOUT THEIR RESEARCH AND LIFE IN THE MCR; UPDATES ON THE *EMMA EXPERIENCE* FROM THE PROGRAMME'S DIRECTOR; OUR SCHOOLS LIAISON OFFICER ON-HAND TO TALK ALL THINGS ACCESS AND OUTREACH; AND SPEECHES FROM OUR CURRENT MASTER, DOUG, AND HIS TWO PREDECESSORS.

## YOU'RE ENABLING POST-DOCS TO JOIN OUR COMMUNITY FROM OCTOBER

**ONE OF THE** priorities we set out through *Emma enables* was to establish a thriving community of 100 post-doctoral researchers at Emma. Post-docs are early career academics, usually on short-term contracts with departments, who drive forward much of the world-leading research within Cambridge. Excitingly, we'll be welcoming the first group of Emma post-docs – over 37 of them, in subjects ranging from Architecture to Zoology – in October. They'll have full College membership and we're currently planning ways to integrate them fully into life here. We will be one of the first colleges to establish a post-doc community of this kind and size, and it's thanks to donors like you.

## YOU'RE LEAVING A LASTING LEGACY

"THE GORDON GLASGOW LEGACY gift has generously supported my doctoral studies and enabled me to pursue not only a research topic that greatly interests me, but one that will hopefully be hugely beneficial to my future career. I was passionate about doing a PhD in History of Art, as having worked in the commercial art sector I was keen to move into a career in a museum, for which a PhD is valuable asset.

"THE LEGACY GIFT has supported me to do a collaborative doctoral award with the National Portrait Gallery, allowing me to gain important experience working in a national museum. I would not have been able to pursue a PhD without this funding, and so I feel hugely privileged to have had this opportunity to further my career ambitions. Over the course of my doctoral studies, I have had some rewarding experiences, such as completing a curatorial internship at the National Portrait Gallery and doing a pre-doctoral fellowship at the Yale Center for British Art in Connecticut. I've learnt a lot from those in the History of Art department at Cambridge and have benefited from the collection at the Fitzwilliam Museum. I would not have had these opportunities if it were not for the Gordon Glasgow legacy gift, so I am hugely grateful to Emma's donors."

SOPHIE RHODES, PHD HISTORY OF ART



## RECOGNISING YOUR SUPPORT AND SAYING THANK YOU

*All donors are listed in the Emmanuel Review and invited to special events.*

### Loyal Donor Circle

For all who have given any amount consistently over a number of years. Benefits include special recognition in the *Emmanuel Review* and the opportunity to dine at High Table on one further occasion (so three times) per year.

### Frankland Society

For all those who pledge a legacy gift, of any size, to Emmanuel. Members are invited to exclusive events and receive special communications from us.

### Master's Circle

Membership is offered to those who give £10,000+, and members are invited to an annual dinner in College. There are additional benefits for those who give £50,000+ and £100,000+ in their lifetime.

FIND OUT MORE AT: [www.emma.cam.ac.uk/supporting/thankyou](http://www.emma.cam.ac.uk/supporting/thankyou)



EMMANUEL COLLEGE  
ST ANDREW'S STREET CAMBRIDGE CB2 3AP  
TELEPHONE 01223 330476  
EMAIL DEVELOPMENT-OFFICE@EMMA.CAM.AC.UK

YOU CAN MAKE A GIFT ONLINE AT  
[WWW.EMMA.CAM.AC.UK/GIVING](http://WWW.EMMA.CAM.AC.UK/GIVING)