

Emmanuel Postgraduate

Freshers' Guide 2023



Prepared by
Emmanuel College MCR

Table of Contents

Welcome to Emmanuel	2	<i>College Counsellor</i>	27
MCR Committee	4	Sexual Health.....	27
How to Get Here	10	Disability	28
Directions to the Main College Site.....	11	Access.....	29
College Map	12	Students with Families	30
Freshers' Week Schedule	13	Healthy Relationships	30
Meal Times in Emma Hall	13	New Relationships.....	30
Accommodation	14	Maintaining Relationships.....	31
Rent.....	14	Bullying and Harassment.....	31
Insurance.....	15	Consent.....	32
First Payment.....	15	Alcohol.....	33
College Postgraduate Properties.....	15	Sexual Harassment and Assault.....	34
Eheat System.....	16	<i>Who can you contact after an assault?</i>	34
What to bring	18	What can the College do to Support You?.....	35
Documents.....	18	Useful Contact Details.....	35
Vaccination.....	18	International Students	37
For Dress.....	18	International Student Team and iCUSU.....	37
Formal Wear.....	18	Visa.....	37
College Room.....	19	Banking.....	37
Kitchen.....	19	Verification Documents.....	38
Laundry.....	20	Health Care.....	38
Sports.....	20	Phones.....	39
Transport.....	20	Religion	40
Do not bring	21	Sustainability	40
What's What and Who's Who	21	Computing	41
Emmanuel College.....	21	University Information Services (UIS).....	41
The MCR Room.....	21	<i>CRSid</i>	41
Porters.....	21	<i>Raven</i>	41
Master.....	22	Connecting your own Computer.....	42
Senior Tutor.....	22	<i>Set up and use Eduroam</i>	42
Bursar.....	22	College Wi-Fi and Computers.....	42
Dean.....	22	Important Websites.....	43
Tutorial Office.....	22	Mailing lists.....	43
Emmanuel Society & Development Office.....	23	Sport and other Activities	43
Maintenance.....	23	College Sports Facilities.....	44
Housekeeping.....	24	Cambridge Life	46
IT.....	24	<i>Pubs and Drinks</i>	46
Welfare	24	<i>Coffee</i>	47
College Welfare.....	25	<i>Restaurants</i>	47
College Welfare Contacts.....	25	Places to Visit and Things to Do.....	488
<i>College Nurse</i>	26	Useful Websites:	499

Welcome to Emmanuel



Hello!

Congratulations on joining Emmanuel — ‘Emma’ as it is affectionately known — and beginning your new postgraduate course. We are thrilled that you have chosen Emma to be your college and we hope that you are excited to be starting at Emma, and at Cambridge. But you probably also have a lot of questions. We hope that this guide will provide answers to some of those questions along with lots of other useful information, both for planning your arrival and once you are here.

Let’s start right at the beginning, because some of you may be wondering what Emmanuel even is — you thought you were joining Cambridge! Well, you are. The University of Cambridge is at the same time one thing and many, being made up of many faculties and departments, and colleges. As a postgraduate student you will belong to both a department, responsible for your education, and to a college, responsible for your pastoral care, accommodation and an important part of your social life.

So, who are ‘we’? Emma has its own Student Unions, who represent the students to College and vice versa, and run various events. The undergraduates have ECSU (www.ecsu.org.uk), and the postgraduates have Emma MCR (www.emmamcr.org.uk). The MCR stands for the rights, welfare and privileges of

all postgraduate students and, more literally, for Middle Combination Room (confusingly, both a body of people and a physical room in college).

'We' are the elected Committee of Emma MCR. The MCR Committee runs a packed social calendar for your enjoyment and helps those running the College understand what postgraduate students need. The primary role of the College is to ensure the well-being of all students, and the MCR helps them achieve that.

As part of both aspects of our role, we run the Freshers' Week activities for the college. The MCR events for Freshers' will run from **Friday 29th September to Sunday 8th October**. Essentially Freshers' Week is a great chance to meet the rest of your Emma cohort at a range of fun events, from a formal dinner to chilled out tea and cake, and everything in between. There will also be plenty of opportunities to ask questions and get to know your way around Cambridge. Importantly on the afternoon of **Saturday 30th September** there will also be a mandatory induction session with lots of important information about who's who and what's what and how things work at Cambridge.

If you will be arriving before Freshers' Week don't worry. You won't be alone and there will be lots of opportunities to meet people and have your questions answered. Email freshers@emmamcr.org.uk and let us know when you will be arriving and we will arrange a welcome tour and invite you along to one of our early arrival events.

One date for your calendar is **Tuesday 3rd October**: the Freshers' Dinner. We hope you can join us! In the past this dinner cost £18 (£14 without wine). Most of the MCR dinners are opt-in, but this one is opt-out, so email diets@emmamcr.org.uk with any dietary requirements (including whether you would *not* like wine) or dinners@emmamcr.org.uk if you do not wish to attend.

The canonical resource for information about the College is the College website. The documents at www.emma.cam.ac.uk/about/documents are a comprehensive compilation. For information from the University, see www.cambridgestudents.cam.ac.uk.

This Freshers' Guide is compiled by the MCR Committee and will hopefully prove to be a useful resource. We're sure you have questions which are not covered here. Therefore, a current Emmanuel postgraduate student (known as a Duck) is assigned to each fresher (Duckling). Ducks are happy to answer questions about

Cambridge and College. Once you arrive in Cambridge, your Duck will arrange to meet all of their Ducklings.

Postgraduate students at Emma come from a wide range of backgrounds and spend their time in Cambridge doing an even wider range of things. As you peruse these pages, we hope you feel the same excitement about your time here that we do every day. We look forward to meeting you very soon indeed!

—Lukas Pin, MCR President.

MCR Committee

The MCR Committee (www.emmamcr.org.uk/wp/current-committee/) is here to put on events for the MCR to enjoy and help with the wellbeing of the graduate community. If you are unsure about something, then please do let us know!



President, Lukas Pin (imp66@cam.ac.uk)

Hello everyone, ❤️ I am Lukas (he/him), a second-year PhD student at the MRC Biostatistics Unit studying response adaptive designs for rare diseases. Before coming to Cambridge, I studied Maths in Bonn and Berlin. As your President, I would like to build on the work of previous committees. With this year's committee, I want to make the MCR an even more inclusive and welcoming place for postgrads studying at Emma. Outside of work, I enjoy running, surfing, music, and cooking for friends. When I am not in Addenbrooke's you usually find me at Fiona's. Please reach out to me if you want to have a chat or if something troubles you, and together we can try to find a solution. president@emmamcr.org.uk



Vice-President, Clare Rogowski (cbbr2@cam.ac.uk)

Hi, everyone! I'm Clare (she/her). I completed an MPhil in Population Health Sciences at Emma last year and am pursuing an MPhil in the History and Philosophy of Science and Medicine this year. I'm from the United States (Los Angeles) and completed my undergraduate degree at Williams College, as some others at Emma did. Alongside my studies, I play on the University Ultimate Frisbee team (let me know if you are interested in joining!), and love going on walks to explore Cambridge, and swimming in the Cam. I want to be as helpful as I can while

serving as your vice-president, so please send me an email or find me in person around the College if you have any issues, questions, or just want to chat. I am looking forward to meeting you all shortly! vice-president@emmamcr.org.uk



Secretary, Samantha Mitchell (sm2596@cam.ac.uk)

Hello, I'm Sam. I am a second year PhD student in the Department of Psychology, researching the neurocognitive basis of hallucinations. I am also a member of an A Cappella group here in Cambridge and I am an avid lover of Musical Theatre. As your secretary, I am responsible for keeping every member of the MCR up to date with events, opportunities, and news. I am also committed to ensuring that every aspect of college life is enjoyable, inclusive, and accessible for all. Please feel free to get in touch with any questions, suggestions or concerns you may have and I will do my very best to help secretary@emmamcr.org.uk



Treasurer, Dylan Cuskelly (dc820@cam.ac.uk)

Hi, I'm Dylan and I am a first-year PhD student in the departments of Engineering and Materials Science studying 3D-printed steel. I just finished an MRes in nanoscience here at Cambridge which I also studied in Dublin. You will likely find me running, rowing, or cycling around Cambridge if I'm not in Fiona's or another coffee shop close by. As your Treasurer, I maintain the MCR accounts and ensure that all the events are properly funded. I aim to try to make everything as affordable as possible for the Emma community. treasurer@emmamcr.org.uk



Computer Officer, Qian Wang (qw251@cam.ac.uk)

Hi! I am Qian, a third-year PhD student in Information Engineering. Originally from China, I spent two years studying in France, Spain and Poland before moving to Cambridge. When not working, I enjoy cooking, rowing, reading and making music. As the computer officer, I hope to ensure the smooth and useful running of the MCR website. I'd love to listen to your suggestions about how to improve the website. Please do get in touch if you have any ideas! computing@emmamcr.org.uk



Education & Careers Officer, Corin Staves

[\(ces209@cam.ac.uk\)](mailto:ces209@cam.ac.uk)

Hi! I'm Corin, a 2nd-year PhD student at the MRC Epidemiology Unit. My work life is at the clinical school, but I spend just as much time at the college making use of the library, playing in Emma's orchestra, joining social events and getting to know other MCR members over games/drinks/meals. The grad talks and symposia are a great opportunity to present and learn about each other's interests and engage with other disciplines in a friendly setting. My background is multidisciplinary (started out studying music and later mathematics) so I'm keen to keep the talks diverse and representative of the breadth of research taking place here. Beyond the grad talks there are networking & careers events in collaboration with Emma alumni. I'd love to hear from everyone so please get in touch if you have any feedback/ideas/suggestions on how to improve our academic and professional development here at Emma!
education-careers@emmamcr.org.uk



Accommodation & Environment Officer, Palani Nagappan

[\(pgn25@cam.ac.uk\)](mailto:pgn25@cam.ac.uk)

Palani here, final year medical student! I spend a lot of time in the hospital, clinical school and by the Paddock in Emma. When we spend a significant amount of time in our accommodation, it is important that we are happy in it to be able to perform at our best. So, how can I help? accommodation@emmamcr.org.uk

MCR Welfare Team - The Emmanuel MCR Welfare Team can be contacted for advice on how to approach the University about welfare issues. Along with our welfare officer, the following students are on the Welfare Committee:



Women's Officer, Grace Kromm (ghk26@cam.ac.uk)

Hi, everyone! I'm Grace (she/her), a 3rd year PhD student in Clinical Neurosciences studying the brains of adorable and sleepy babies at the Rosie Hospital. I'm from the United States (Boston) and did my undergraduate degree at Williams College, like some others on this page :). I love listening to and making music, and I sing Alto in the Emmanuel Chapel Choir. I'm so excited to be your Women's Officer, and as such, I would simply love to be someone that each of you feels

comfortable talking to about anything that's on your mind—any trials and triumphs, related to Emma postgrad life or not. I'm so looking forward to getting to know all of you! women@emmamcr.org.uk



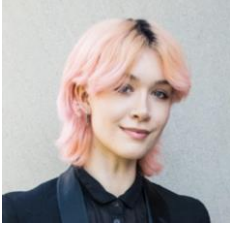
International Officer, Alex Abrudan (aca41@cam.ac.uk)

Hi, Emma! My name is Alex and I am the newly elected MCR International Officer. I have been a member of Emma for 4 years, during which I have done my B.A. and Master's in Natural Sciences. This October, I am excited to be starting my PhD in Chemistry, where I will do my best to unravel the elusive causes of protein misfolding, which is a notorious hallmark of neurodegenerative diseases. When not in the lab, you can find me in Emma Hall, at the boathouse or playing croquet on the Paddock. I am truly looking forward to welcoming all Emma freshers, from all corners of the world, helping you settle in smoothly, and organizing wholesome events all across the year! Do not hesitate to reach out at international@emmamcr.org.uk



Families' Officer, Anoop Tripathi (at925@cam.ac.uk)

Hi, my name is Anoop Tripathi. I am from India. I am first year PhD student at Department of Plant Sciences. I'm committed to improving crops in face of climate change and insuring food security. You can see me outdoors rowing, playing cricket or cycling on weekdays or find me indoors playing video games late at night during weekends. I am interested in making positive changes around people. As a Gates Cambridge Scholar, Well-being Advocate and EDI committee member at Department of Plant Sciences, I am bringing diverse experiences to our Emma community. I am born and brought up in a big joint family, so I know the values and support from family members. I will try to provide utmost support and resources as Families' Officer to people here at Emma with their families. I understand that the experience of graduate students with families is unique and will endeavour to make Emma a family friendly community for them and their loved ones families@emmamcr.org.uk



LGBTQ+ Officer, Ciara Hervas (cbh34@cam.ac.uk)

Hi everyone! I'm Ciara (they/them) and I'm a first-year PhD student in History of Art studying queer photographic history. I did my undergrad at Harvard before coming to Emma last year for my MPhil, and I'm originally from Philadelphia in the US. I enjoy taking and looking at photos, museum hopping, and camping out in cafes. I am very excited to be your LGBTQ+ officer, and to continue getting know everyone! I aim to help foster an inclusive and welcoming environment for LGBTQ+ people at Emma, so please feel free to reach out with any questions or concerns. If you have any ideas for events or outreach you would like to see, please let me know 😊
lgbt-plus@emmamcr.org.uk



Minorities Coalition Officer, Farah Hina (@cam.ac.uk)

I am Farah, currently in my 3rd year of PhD in Psychiatry. As a Minorities Coalition Officer, I am super keen to foster collaboration and promote diversity as well as common goals that bind us all together minorities@emmamcr.org.uk



Disabled Students' Officer, Kate Williamson (kw486@cam.ac.uk)

Hello everyone and welcome to Emma! I'm Kate, I've been a part of the MCR since my MPhil in Computational Biology and am now a 2nd year PhD student. I'm a part-time cat parent and my free time is spent avoiding gluten and playing Zelda. I believe very strongly in accessibility for all aspects of college life and have experience navigating the welfare system in college and the wider university. Please don't hesitate to drop me a message if I can help!
disabilities@emmamcr.org.uk

Entertainment (Ents) Team



Internal Events Officer, Isaac Sebenius (iss31@cam.ac.uk)

Hi! I'm Isaac, a second-year PhD student in psychiatry studying brain MRI scans to better understand neurodevelopment and mental illness. Outside of work you can probably find me practicing piano or running along the Cam. Emma is the best community and I'm stoked to be your

internal events officer in charge of organizing events like pub trips, open-mic nights, and movie outings. If you have any suggestions for events, please do get in touch! events@emmamcr.org.uk



External Events Officer, Tung Nguyen (thn30@cam.ac.uk)

I'm Tung in the NIH OxCam MD/PhD program, splitting my time here at Emma and the Department of Chemistry, my medical school at the University of Wisconsin; and the NIH in the US. I'm the External Events Chair, primarily involved in organizing Formal Halls between different colleges. This serves as opportunities to meet postgraduate students at other colleges' or at Emma's dining hall. I volunteered for this position because we have a rare opportunity here to create a network of lasting colleagues and friends. I challenge us to create a most welcoming environment so that we all have memories to cherish in our short time together at Emma. swaps@emmamcr.org.uk



Sports Officer, Casper Siu (cs2099@cam.ac.uk)

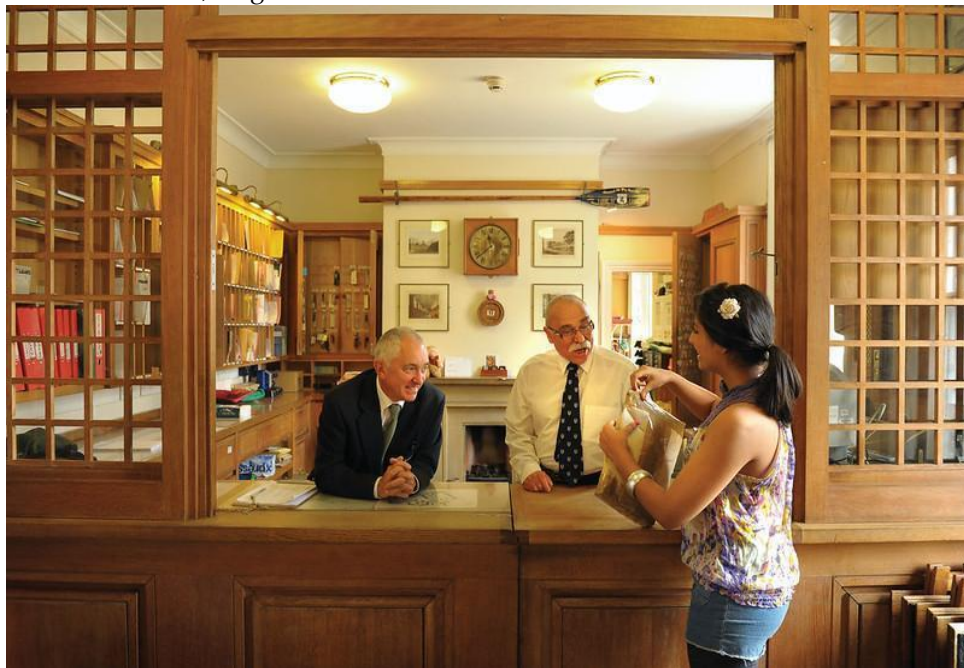
Hello! I'm Casper (he/him), a second-year PhD student in Genetics trying to learn human history from modern and ancient DNA. My department is right next to college, so I can often be found in Emma Hall at lunchtime. I love cycling, watching cycling, and badminton. As Sports Officer, I aim to enable and encourage wide(r) sports participation at Emma. I also give inductions for the college gym. Please get in touch if you have any suggestions! sports@emmamcr.org.uk

How to Get Here

Address: Emmanuel College, St Andrews Street, Cambridge, CB2 3AP

Contact: Porters' Lodge **01223 334200** (porters@emma.cam.ac.uk)

Emmanuel College is situated in central Cambridge. Visit www.emma.cam.ac.uk/about/contact/ for directions and for an interactive map visit www.emma.cam.ac.uk/about/discover/. The front gate to college is only open between 6am and midnight, so if your transport is delayed and you will be arriving outside this time, ring to let them know.



Upon arrival visit Emmanuel College Porters' Lodge, located at the main entrance to college, to collect your **room key and university card**. If you are driving to Barnwell, you will also need to collect a **gate key** from the porters in order to access the drive. There will also be some documents to collect, including our printed guide.

Directions to the Main College Site

By Train

Direct trains to Cambridge are available from a number of locations. From London (Kings Cross and Liverpool Street) trains leave half-hourly throughout the day, with tickets available at the station (around £30 one-way). Timetables are at www.nationalrail.co.uk and on the Trainline app. See the map for directions from the railway station to Emma. It's a 15-minute walk: straight down Station Rd, turn right onto Hills Rd. and continue into the city centre (and Emma). Buses run to the city centre (with a stop right outside the College) every 10 minutes, and there'll be plenty of taxis available (for around £7). To book in advance, try Panther at **01223 715 715**.

By Bus or Coach

National Express, Stagecoach and MegaBus run coach services from most major locations in the country (including airports) to Cambridge. These will arrive at Parker's Piece (Parkside stop), the large open space adjacent to College. For timetables and prices, see www.nationalexpress.com or www.uk.megabus.com. For more maps of the University, visit www.cam.ac.uk/map. For local buses, the main bus station is located at Drummer Street, also next to the College.

By Air

The closest airport to Cambridge is London Stansted. A direct train, as well as buses, connect it to Cambridge (~40 minutes). If coming from outside Europe, London Heathrow is usually the 1st port of call. National Express offers direct coaches to Cambridge from both Heathrow and Gatwick.

By Car

If driving into Cambridge, you should be aware that a large number of the roads in the centre are one-way streets. Also be aware that there will be a lot of cyclists. On some one-way streets, cyclists alone may travel in both directions; these streets aren't always marked. While parking outside the main entrance to Emma is not possible, Emmanuel has short term parking available with access from Park Terrace, Parker Street and Emmanuel Street. If in need of help finding the parking access or opening the gates, seek assistance at the College's Porters' Lodge.

Freshers' Week Schedule

The Emmanuel College MCR has a week of events and activities planned to help you get the lay of the land. We have a provisional schedule given on the separate Induction Programme in your pack; the latest version will be available at www.emma.cam.ac.uk/admissions/graduates/freshers/

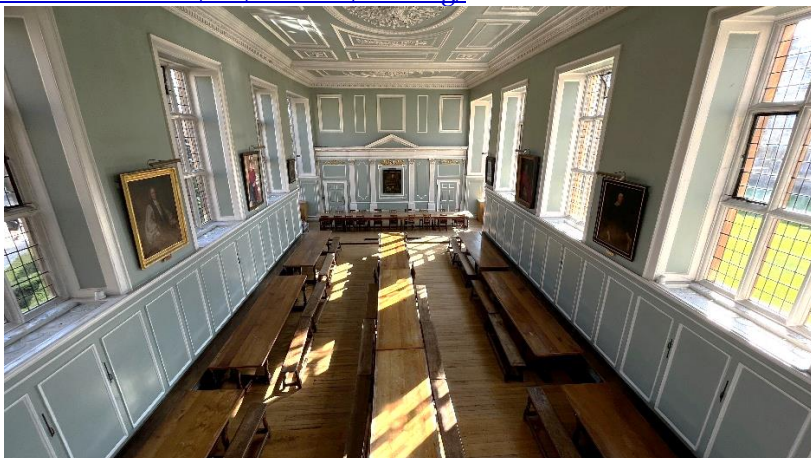
If you arrive early, email freshers@emmamcr.org.uk and we'll make sure you get invited along to events in the lead up to this week. Keep an eye on your emails and the MCR Facebook page for updates, changes and more information on the Freshers' activities.

Meal Times in Emma Hall

The Dining Hall in front court is open in full term at the following times:

Meal	Time	Day
Breakfast	8.15am – 9.15am	Mon – Sat
Lunch	12.15pm – 1.30pm	Mon – Fri
Brunch	10.30am – 12.30pm	Sun
Informal Hall	5.45pm – 7.00pm	Daily
Formal Hall	7.30pm	Daily except Wednesday (Gown must be worn)

Detailed information on how to book the place can be found here: www.emma.cam.ac.uk/life/facilities/catering/



Accommodation

Policies can be found in documents titled **Domestic Matters** on the College website under www.emma.cam.ac.uk/admissions/graduates/freshers/ Accommodation and Finance

Students from outside the UK and Ireland are guaranteed College accommodation for the first three years of their stay. UK and Ireland residents are guaranteed College accommodation only for the first year, then subject to room availability.

College rooms are single dormitory-style rooms, with shared kitchens, bathrooms and common areas. Couples' flats are self-contained and available by waitlist. Most houses have a Bedder who will empty communal bins, vacuum, and clean in communal areas. Onsite accommodation (including Park Terrace) has been designed for residents to use the Hall for food and the centralised laundry service.

Rent

Rent is calculated based on the grade of room, distance from college, year of arrival and inflation in subsequent years. The figures below apply for students joining the college this year, living on the main College site.

Room grade	Maximum weekly rent for 2023/2024
1	£ 148.12
2	£ 159.92
3	£ 171.92
4	£ 183.82
5	£ 195.72
6	£ 207.62
7	£ 219.42
8	£ 231.42

For everyone living in College accommodation, a Contribution to Fixed Costs (CFC) is included in the rent. In exchange for paying this charge, food at Informal Hall is discounted. Those who live closer to College pay a higher CFC than those who live further away as it's expected they'll eat in Hall more often. Those who live out of College accommodation and in couples' flat don't pay CFC and therefore don't have any discount. Please note, that you will be charged from the date agreed in your accommodation email, not the actual arrival date.

The Cambridge Students' Union (CSU) provides some information for private rental (www.cambridgesu.co.uk/resources/guides/housingtoolkit/). You can also search here: www.accommodation.cam.ac.uk/

Insurance

The college-wide insurance policy (included in rent) will be added onto your college bill for the time that you are in residence and covers most common items in a student's room. It also covers bikes up to £200, and extra items like musical instruments can be added for a small extra charge. Details can be found at www.emma.cam.ac.uk/about/documents/pdfs/Studentinsurance2023.pdf

First Payment

You will have been asked to pay the First Payment before arrival into Cambridge; this is not a deposit as charged in the private rental sector. The First Payment is based on an average term's rent and meals, and will be refunded against your final College bill, minus any outstanding charges. If you have any issues with payment, you should contact one of the Postgraduate Tutors ([see College Welfare Contacts](#)).

College Postgraduate Properties

www.emma.cam.ac.uk/admissions/graduates/accommodation/

Park Lodge (CB1 1JJ)

This is on the East corner of the main College site. Park on Park Terrace while you collect your card and keys, and then you may be able to park up outside the front of the property while you make the move.

2 Park Terrace (CB1 1JH)

This is halfway between Parker St and Regent St. Park on Park Terrace while you collect your card and keys, and then you may be able to park up outside the front of the property while you make the move.

Barnwell Hostel, 43 Newmarket Road (CB5 8EG)

Access to Barnwell is by university card so before leaving the Porters' Lodge make sure your card is activated and working. You will also need the gate key if driving. Continue along Park Terrace (a one-way street), with Parker's Piece on your right and College your left. Turn right onto Parkside. At the crossroads at the end of Parker's Piece take the left filter onto East Rd. At the end of East Rd. is a large roundabout; take the 1st exit (left) onto Newmarket Rd. Barnwell Hostel is on the right-hand side of the road, about 250 m from the roundabout.

1 Cutter Ferry Lane (CB4 1JR)

Start as though driving to Barnwell Hostel (above) but at the Newmarket Road roundabout take the 2nd exit onto Elizabeth Way, crossing the river. Take the 1st exit at the next roundabout onto Chesterton Rd, the 1st left onto De Freville Avenue, 4th left onto Aylestone Rd., right onto Belvoir Rd. and then follow the road round onto Manhattan Dr Cutter Ferry House is at the end of this road, to the left of the bridge. It's blue and white. Access to the gate is by university card, so make sure to check it's working once you collect it from the Porters.

33 and 43 Tenison Road (CB1 2DG)

Visit the Porters' Lodge to collect keys. There is room for drop-off at the front of each property. Driving from the car park off Park Terrace: turn left along Park Terrace. At the end of the street turn right onto Parkside. At the junction go straight on to Mill Road. Take the 2nd right after 400m, to Covent Garden, and then the 1st left after the pub onto Cross Street. Continue across the next two junctions to reach Tenison Rd. 33 is to the left; 43 the right.

Blantyre Hostel (24-28 Glisson Rd, CB1 2HF)

Located at the junction of Glisson Road and Gresham Road. Your card must be activated at the Porters' Lodge. Head on Park Terrace towards Parkside, turn right onto Parkside. Continue onto Mill Road. Turn right onto Covent Garden, turn left onto Mill St. Turn right onto Glisson Rd. It will be on the left.

285 and 287 Hills Road (CB2 8RP)

Accommodation here is reserved for medics.

Parking Space

Once your room is allocated The Head Porter Mr Stephen Montgomery will send you an email with information about parking space (sm878@emma.cam.ac.uk). The fee is £30 per term.

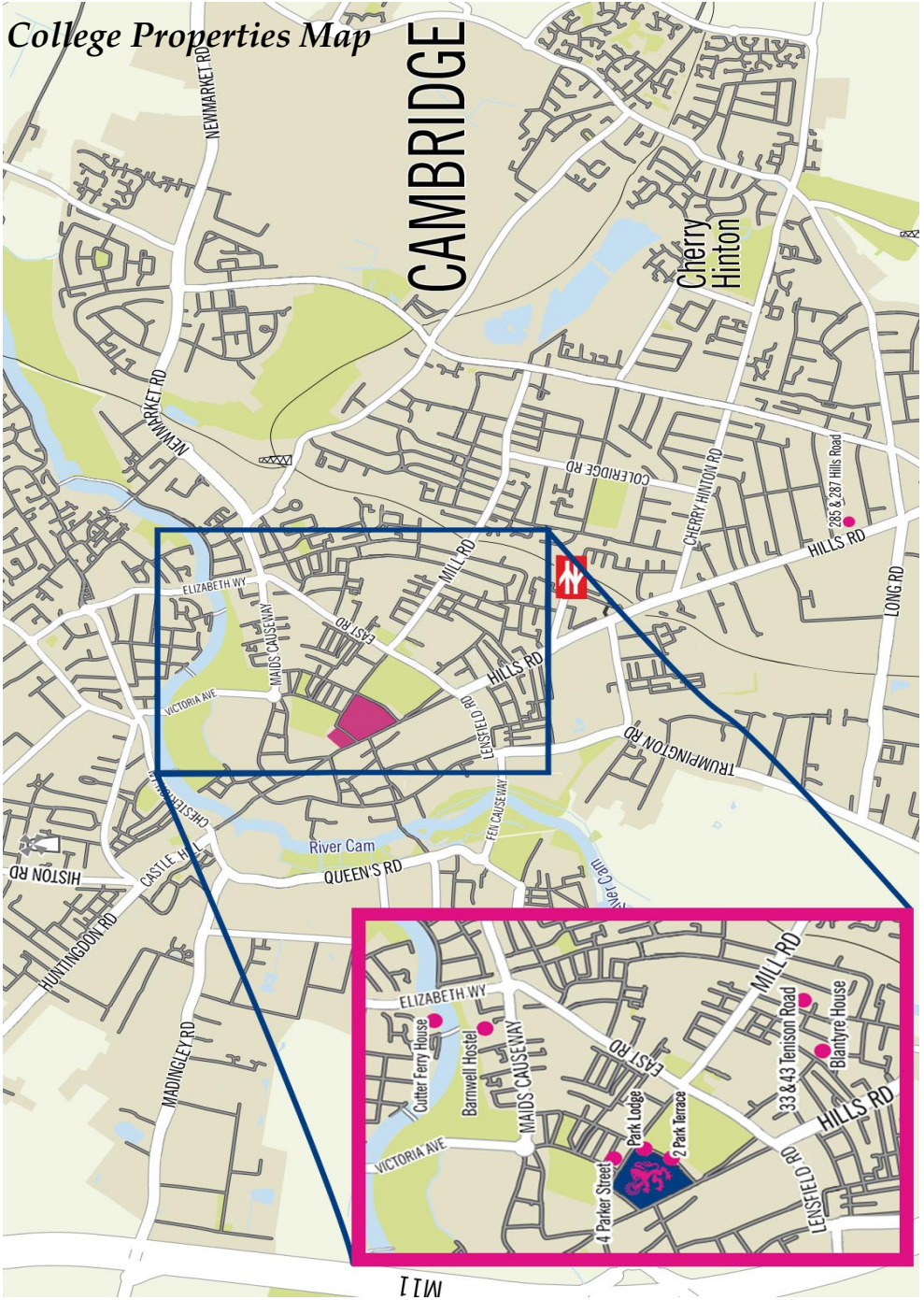
Exeat System

Exeat form is for the use of Emmanuel Postgraduate Students who are leaving Cambridge permanently and/or are vacating their College-owned accommodation, if they finish one course and start another one next academic year or withdrawing from the current course.

www.emma.cam.ac.uk/life/facilities/accommodation/exeat/graduates/

College Properties Map

CAMBRIDGE



TTW

What to bring

Documents

UK residents should bring a **passport** as it is needed for an identity check at the beginning of your studies and if you want to be paid by the college for teaching or bar work. It is also needed as proof of ID for registering with some GP services.

All students starting a new postgraduate degree **must** visit the Tutorial Office (Ground floor, B staircase) with valid ID and visa. Please do this between 8.30am – 5pm on Wednesday 4th, Thursday 5th or Friday 6th October. Email tutorial-office@emma.cam.ac.uk with any questions. If you are starting in Lent or Easter Term - as soon as you arrive to UK

UK students - UK passport (if you do not have a passport, provide your full birth certificate along with a photo driving licence).

International students (original documents) - a valid passport and documentation confirming immigration permission along with the proof of entry into the UK (boarding pass).

Vaccination

You'll need to register for medical services (which you must do once you arrive). Details about recommended vaccination you can find here: www.studentsupport.cam.ac.uk/physical-health/communicable-diseases/vaccination and on the NHS website www.nhs.uk/conditions/vaccinations/pages/men-acwy-vaccine.aspx. This can be done before arrival in Cambridge.

For Dress

Bring some warm clothes for the fall and winter, including a good winter coat and plenty of jumpers. The weather in Britain is often quite variable, so be prepared for your daily downpour (umbrellas for the walkers, waterproof trousers for the cyclists).

Formal Wear

For Matriculation in October, the dress code is either a dark suit and white shirt, a dark skirt with a white blouse, or a dark dress. The MCR also holds fortnightly formal dinners where dresses and suits are appropriate. More formal Black-Tie

dinners are organised in the autumn/fall and spring, for which you will need a formal dress or dinner jacket.

Gowns are required for many college functions and should be worn at MCR formal dinners. The Porters' Lodge often have second-hand gowns to buy in the first week or two of term. Gowns can also be purchased second-hand from the Graduate Union or new from Ryder and Amies, 22 King's Parade (www.ryderamies.co.uk). New gowns can cost from £60–190.

College Room

College accommodation provides each student a **single room** equipped with a bed, coffee table, desk, lamp, chair, bookshelf, rubbish bins (recycling and general), and drawers or wardrobe. Some rooms will include a small refrigerator (or access to one in a nearby kitchen). Some rooms have few power outlets, so bring a strip multiplug adaptor (non-strip style is banned in college). **You are not allowed to sublet your room while you are away or copy the room key.** Overnight external guest (non-members) must be register if staying for more than one night via www.emma.cam.ac.uk/life/facilities/accommodation/visitor/ (Raven required). **Only one guest is allowed at a time.** Detailed information about visitors can be found in the document called College Regulations, you can find it here under Other Information: www.emma.cam.ac.uk/admissions/graduates/freshers/

You will need to provide your own bed linen (college beds are single size), although a single duvet and pillow are provided. You can request a bedding package prior to arrival or once you move into your room. The bedding package include a single sheet, duvet cover and one pillowcase and is priced at **£15** charged to your College bill. Please follow the link to the college website: www.emma.cam.ac.uk/apps/helpdesk/ (Raven required). Click on Add New Request, fill in the details required, choose Household as Job type and lastly click on 'Add Job' on the left-hand side corner of the tab.

There are many shops within walking distance of Emma where you might find additional linens and blankets. A Hoover/vacuum can be found in your property, but basic cleaning supplies such as wipes or disposable towels may be useful.

Kitchen

All postgraduate houses have their own kitchens, so it is advisable to bring some basic kitchen items if you intend to be cooking regularly, e.g. plate, bowl, cups, cutlery. However, kitchens are shared between several postgraduate students so

there may be some communal crockery available that has been left by previous students.

Laundry

There are 3 washing machines + drier in the college for postgrads in the North Court. Please book a slot at the Porters' Lodge. You may want an airing rack, this is especially handy for airing sports gear. Each Emma student can have one 4.5kg bag laundered per week in the Laundry Service (East Court). Bookings must be made via CASC (Raven needed). You can find 'How to Book' instruction here: www.emma.cam.ac.uk/life/facilities/roombooking/

Sports

Emmanuel has several free sports facilities, including an indoor gym, squash courts, tennis courts, football and rugby pitches, a cricket pitch, ping pong, croquet, and an outdoor swimming pool. It is advisable to bring appropriate sports gear and proper shoes for these activities. The local area is ideal for cycling. Squash racquets and balls are available at the MCR and tennis racquets are available at the Porters' Lodge for student use.

Transport

Most students find a bike very helpful. Make sure you bring or buy a sturdy D lock, lights, and a helmet. Repair tools and emergency bike lights are available in the Porters' Lodge. Bike theft is a problem in Cambridge so you may not want to bring a bike that would be expensive to replace. Second-hand bicycles can be purchased in several shops in town and new bikes are on sale at the Freshers' Fair on Parker's Piece.

If you intend to cycle in Cambridge it is probably worth joining www.cyclinguk.org (£50 per year), who offer third party liability insurance to all members. The college's Health & Safety Handbook (at www.emma.cam.ac.uk/about/documents) has some advice on cycling.

Railcard

If you're interested in cheap train travel, you can apply at www.railcard.co.uk/ or a train station for a *16-25 Railcard* for £30 to get 33% off all rail fares for a year (or £70 for 3 years). If you're aged between 16 to 25 years old, you'll need a passport photo and proof of your date of birth (e.g. passport, UK driving licence, birth certificate or, for non-UK nationals, national identity card). If you're over 25 but studying full-time, you still qualify but need proof that you're in full time

education. In addition, there's also a 26-30 Railcard that might be suitable for the students' partners who don't qualify for the student Railcard.

Do not bring...

YOU WON'T NEED A CAR. More specifically, you are not allowed to keep a car in Cambridge without permission from your Tutor (see the University Proctors' pronouncement at www.proctors.cam.ac.uk and www.proctors.cam.ac.uk/documents, specifically concerning motor vehicle www.proctors.cam.ac.uk/documents/motor-proctor-4-2.pdf). Car parking is expensive and unreliable.

DON'T BRING A PET as they are not allowed in College accommodation.

DON'T BRING NETWORKING EQUIPMENT, as all accommodation has Wi-Fi.

Finally, college is fairly strict on furniture – so NO BEDS OR MATTRESSES EITHER.

Refer to Domestic Matters at

www.emma.cam.ac.uk/admissions/graduates/freshers/

What's What and Who's Who

Emmanuel College

One of the 31 colleges which together with faculties and departments make up the University. Emmanuel was founded in 1584 and is home to some 500 undergraduates, 270 postgraduates, 90 fellows and 150 staff.

The MCR Room

The common space for postgraduates is located on the first floor of the Furness Lodge. Come here to read, watch our TV, browse the internet, print, or relax with a hot drink. Access is via university card.

Porters

The Porters are extremely helpful, welcoming and professional. If you need keys, have large or valuable packages waiting, or want to book a Squash Court, then the Porters' Lodge is truly the place for you. The PLodge is staffed all day, but the front

gate is closed between midnight and 6am. The Porters deal with the occasional emergency that crops up in college and are a good first port of call. porter@emma.cam.ac.uk

Master

Doug Chalmers, DSO, OBE is Master of Emmanuel College. He chairs the bodies which govern the college, represents the college beyond the University, and officiates at events such as Matriculation and Graduation. masterspa@emma.cam.ac.uk

Senior Tutor

The Senior Tutor, Professor Robert Henderson, has overall responsibility for the education and welfare of Emmanuel students. He is responsible for the academic and pastoral aspects of the college, including admission of students, access, outreach initiatives and recruitment of teaching fellows (rmh1003@cam.ac.uk)

Bursar

Financial Office of the college, but Ms Catherine Webb is also responsible for the college's duties under the General Data Protection Regulation, and the College's alcohol licence. Ms Webb is responsible for all buildings and services at the College (bursary@emma.cam.ac.uk)

Dean

The Revd. Jeremy Caddick organises the Chapel Services and Christian Community at Emmanuel and has a pastoral role in the college. He is also a Postgraduate Tutor and the Praelector, which you'll discover at graduation (jlc24@cam.ac.uk). You can read Dean's welcome letter here: www.emma.cam.ac.uk/admissions/graduates/freshers/

Tutorial Office

The Tutorial Office is at the bottom of B staircase, in the Front Court. It is easiest to contact the Office by e-mail. If you need to visit in person, plan to do so between 10am-12.00pm and 1.30pm-3:30pm Monday through Friday. tutorial-office@emma.cam.ac.uk

The Postgraduate Administrator, Anna Krupinska, will be able to help with accommodation queries and any straightforward official paperwork you might require that you cannot find via your CamSIS Homepage www.camsis.cam.ac.uk

Use this link to require Bank Verification Letter www.emma.cam.ac.uk/admissions/graduates/freshers/verificationrequests/index.cfm (Raven NOT required) and Verification Documents Request www.emma.cam.ac.uk/life/documents/verification/ for any other documents (Raven required).

The Senior Tutor's Secretary, Mrs Marion Dorkings (tutorial-office@emma.cam.ac.uk, 1st Floor, B staircase), manages College Meeting Room Bookings (www.emma.cam.ac.uk/conferences/booking/form/) and the University Cards (unicard@emma.cam.ac.uk).

The College Registrar Dr Anna Osipova (college-registrar@emma.cam.ac.uk), runs the Tutorial and Postgraduate Admissions Office. She is in charge of all student records and is the Secretary to the Master and Tutors' Committee. She is the first person to contact if you have been unable to get in touch with your Postgraduate Tutor, feel your query is complicated or your situation requires special attention (e.g. questions of immigration, disability, changes in your private circumstances).

Emmanuel Society & Development Office

First floor of D staircase and is run by Dr Sarah Bendall and her team. The Emmanuel Society is the alumni-led society for all members of the College. The Society organises two careers events a year (Michaelmas and Lent terms) for students, when groups of alumni return to College to give advice and guidance about careers, CVs, jobs and life after Emma. The Society also organises a lot of events for members. If you see an event advertised and would like to attend, please contact emmanuel-society@emma.cam.ac.uk.

The Development Office's role is to keep in touch with members and to help support students and the College in general. A lot of funding for students, such as bursaries, grants and overall support, is raised by the Development Office, as well as funds for maintaining the buildings and grounds, teaching and research, and other College purposes, development-office@emma.cam.ac.uk.

Maintenance

Buildings Manager

David Hobbs manages all building work across the college. You should email maintenance@emma.cam.ac.uk if you have feedback for us to provide for him.

Maintenance Manager

You may encounter Maintenance Manager, Darran Kerry when there is maintenance work to be done, maintenance@emma.cam.ac.uk

Please report problems as soon as possible, using the college website www.emma.cam.ac.uk/apps/helpdesk (Raven required)

Housekeeping

Housekeeper

The Head of Housekeeping, Donna Bass is responsible for furnishings and the Bedders. The office is at the bottom of K staircase, in the Hostel, household@emma.cam.ac.uk.

IT

Information Services

The Head of Department, Tom Corder and his team are always happy to help.

If you have any enquiry, please report the problems via helpdesk www.emma.cam.ac.uk/apps/helpdesk (Raven required) or email is@emma.cam.ac.uk

Welfare

IN CASE OF AN EMERGENCY IN COLLEGE ALWAYS GO TO THE PORTERS' LODGE FIRST. They are your first point of contact and always able to help.

The primary role of College is to ensure the wellbeing and welfare of all students throughout their time at Emma. Welfare at Emmanuel College concerns a broad range of topics with a variety of resources, channels and people who are here to help you through your studies. Postgraduate study is not always easy, but in the right environment, and with the right support networks, it can be both manageable and enjoyable.

Acute financial and accommodation issues are common, and academic difficulties (in particular concerning careers) are faced by almost everybody at some point. The college is an environment in which people feel comfortable discussing all these challenges and the various resources it offers can often be a great starting point towards resolving them.

Should you have any queries or concerns regarding welfare at Emmanuel College or any pre-arrival access or support requirements, contact the College Registrar (college-registrar@emma.cam.ac.uk). You should also always feel free to reach out to the MCR Welfare Officers at welfare@emmamcr.org.uk or other members of the MCR Welfare Team.

College Welfare

The Tutorial System

The College has a statutory duty and many years of experience concerning issues facing postgraduate students. This mainly occurs through the tutorial system; Tutors, who are academics and Fellows of the College, individually respond to welfare issues and collectively plan to prevent their occurrence. The University has produced a concise description of how this tutorial support works, www.studentsupport.cam.ac.uk/.

There are three Tutors whose main focus concerns postgraduate students, yet anyone may approach any Tutor with any issue. Many undergraduate Tutors supervise masters and PhD students so are keenly aware of situations postgraduate students face.

In addition to reacting to welfare issues, Tutors can help proactively with topics such as career direction and conference funding; if there is something you might need during your time as a student, you should definitely ask. More about funding opportunities you can find here: www.emma.cam.ac.uk/admissions/graduates/funding/ and www.emma.cam.ac.uk/life/welfare/funding/graduates/ (Raven needed)

[MCR Welfare Team](#) - Can be found on the MCR Committee section of this booklet.

College Welfare Contacts

Senior Tutor

Professor Robert Henderson - rmh1003@cam.ac.uk, 01223 334 254

Postgraduate Tutors

The Revd. Jeremy Caddick - jlc24@cam.ac.uk, 01223 334 264

Jeremy is the College Dean and Chaplain and plays a major role in college welfare. He is the Tutor for all postgraduates with last names beginning **A to H** and you will normally be contacted by him at the start of your studies if that includes you.

Professor Clare Pettitt - cp240@cam.ac.uk, 01223 335 719

Clare is a professor of English a Postgraduate Tutor for students with last names beginning **I to P**.

Professor Catherine Rae - cr18@cam.ac.uk, 01223 742 973

Cathie is an energy researcher and a Postgraduate Tutor for students with last names beginning **R to Z**.

Advisor to Women Students - Dr Devon Curtis dc403@cam.ac.uk

Advisor to BAME Students - Dr Pallavi Singh ps753@cam.ac.uk

You may contact any Tutor with any issue you have:

Prof. Bill Broadhurst – rwb1002@cam.ac.uk

Prof. Alex Jeffrey – asj38@cam.ac.uk

Prof. Alexandre Kabla – ajk61@cam.ac.uk

Prof. Dominique Lauga – df126@cam.ac.uk

Dr Corinna Russel – cr215@cam.ac.uk

Dr Nigel Spivey – njs11@cam.ac.uk

Dr Ross Wilson – rmw24@cam.ac.uk

Dr Kate Spence – kes1004@cam.ac.uk

Prof. Phil Howell – pmh1000@cam.ac.uk

Prof. Robert Henderson – rmh1003@cam.ac.uk

College Nurse

Mrs Diana Lloyd - nurse@emma.cam.ac.uk or dwl25@cam.ac.uk, 01223 334 296



The Nurse maintains a small Sick Bay on E staircase, treats minor illness and injury, and refers on where applicable. She is available for room visits and can be consulted on all health-related matters. Times are posted up in the Porters' Lodge. For an appointment outside these times, please email Mrs Lloyd.

College Counsellor

Mr Tim Ellis - counsellor@emma.cam.ac.uk or the24@cam.ac.uk

The counselling room is at 55 St Andrews Street, the entrance is in college in Chapman's Gardens. Use your card to enter the building or press the Counsellor button. Once inside, take the first door on your left and go up the back staircase. There is a waiting room on your left; the Counsellor will come and meet you there.



Tim, is in College two or three days a week during term time. He is also available out of term. To make an enquiry or request an appointment, it is best to email him. He offers appointments during the day and early evening and will try to offer a convenient time. Appointments are usually 50 minutes long and take place in person in College. The waiting time varies but is usually within two weeks from the time you first contact him. Please find a letter from Tim here: www.emma.cam.ac.uk/admissions/graduates/freshers/ under Support & Pastoral Care.

The University Counselling Service

The Counselling Service is also available to students, offering a wide range of free services including individual or group counselling, workshops on common problems faced by students www.counselling.cam.ac.uk

Sexual Health

Free sexual health supplies are available in the MCR welfare box. It is located in the MCR (Furness Lodge) and the Pigeonhole Room. Pregnancy tests can be collected from the MCR welfare box or requested anonymously via

www.cambridge.nightline.ac.uk. You can also reach out to the Welfare or Women's Officers to discuss any issues related to sexual health. Free contraception and STI screening are available at: The Lime Tree Clinic, Brookfields Hospital, 351 Mill Road, Cambridge CB1 3DF. Request at-home STI kit online: www.letstalkaboutit.nhs.uk

Disability

Emmanuel College is committed to ensuring that all postgraduate students with a disability receive the support they need to fully participate in Cambridge life and do not face any discrimination. You can contact your Postgraduate Tutor, or the MCR's Disabled Students' Rep, (disabilities@emmamcr.org.uk) whose role is to represent all students with any visible or invisible condition. We also encourage anyone with a disability to contact the College Disability Liaison Officer before you arrive for any specific advice or information, and to ensure there is appropriate support upon arrival.

College Disability Liaison Officer - college-registrar@emma.cam.ac.uk

In practice at Cambridge, the definition of 'disability' includes a wide range of conditions such as

- Mental health conditions i.e., anxiety, depression, and BPD
- Autism spectrum conditions
- Sensory impairments i.e., hearing and visual
- Specific learning difficulties i.e., dyslexia or ADHD
- Physical impairments and injuries i.e., wheelchair users and upper limb disorder
- Long-standing conditions i.e., cancer, HIV, chronic fatigue, epilepsy, syndrome, diabetes

There are many resources available within the University for disabled students. It is important to note that you are not required to self-define as disabled in order to access this support and you have complete control over disclosure of your disability to different departments and faculties. Support is mainly accessed through the Accessibility and Disability Resource Centre (ADRC) www.disability.admin.cam.ac.uk - Student Services Centre, Bene't St, Cambridge CB2 3PT, disability@admin.cam.ac.uk, 01223 332301

Emmanuel has their own disability advisor at the ADRC and they will be able to discuss with you any support that you may benefit from as well as reasonable adjustments for your studies, which there is a legal requirement for the University to put in place for you. This support can take any form from changes to your living or learning environment, or to particular provisions, criteria or practices (e.g. placing automatic doors at the entrance to your faculty building, providing large print materials, extra time or rest breaks in exams, specialist mentoring etc.). It may be useful or necessary to have an occupational health assessment in your new department. Be sure to check whether you should self-refer or if a management referral is needed www.oh.admin.cam.ac.uk/services/referral-process

For additional needs (travel costs or specialist ergonomic equipment) you can also apply to the following (may take several months so apply early):

- UK Nationals can apply to Disabled Students Allowance. www.gov.uk/disabled-students-allowances-dsas/overview
- EU and International Students can apply to the International Disabled Students' Fund. www.disability.admin.cam.ac.uk/funding-students/eu-and-international-students

Access

Each College has an access guide which can be found here: www.disability.admin.cam.ac.uk/access-around-university/access-colleges. All MCR events are held in locations with step free access and further access statements can be found on each event description on our [website](#). CUSU has also created an for some of the pubs, cafes and leisure centres in Cambridge

Students Union Advice Service (SUAS) 17 Mill Lane, Cambridge, CB2 1RX
SUAS provides useful information about more local support and services. www.studentadvice.cam.ac.uk and advice@studentadvice.cam.ac.uk; [01223 746999](tel:01223746999)

Cambridge SU Disabled Students' Campaign - www.disabled.cusu.cam.ac.uk

Students with Families

Starting a postgraduate course at Cambridge alongside maintaining daily family life can be tough. The Emma MCR has a Families' Officer_ to provide support and advice. We aim to organise family friendly activities throughout the year, including picnics and day trips. Please contact the MCR families officer families@emmamcr.org.uk for any queries/concerns.

The Graduate Union has a dedicated Families' Officer families@gradunion.cam.ac.uk and runs a free weekly parent and toddler group on Friday mornings and other events.

Useful information can be found here: www.postgraduate.study.cam.ac.uk/portal/family.

You may want to join the "Students with Families" Facebook group www.facebook.com/groups/353576598063536/

Healthy Relationships

Being a Fresher at Emma is exciting, particularly as we're known for being the friendliest college! This year you'll have the opportunity to meet many new people, forming friendships in Emma and in the wider Cambridge community, getting to know college staff and working with your supervisor.

Emma is committed to being an inclusive, friendly, and safe community for all who study and work here. As an MCR, we uphold this college ethos and would like to take the opportunity to encourage you to consider some aspects of postgraduate study which you may not have thought about before. These topics will be presented and discussed in greater depth during the college induction sessions.

New Relationships

Relationships with Supervisors and College Staff

- Consider that it may be difficult to define friendship and professional boundaries.
- Be aware of differences between the roles of your Supervisor, Advisor, Postgraduate Tutor and the relationships you will form with them.
- The hierarchical structures and authority within college may differ from your undergraduate experience.

- Addressing emails or conversations can be stressful with so many esteemed academics around. Usually including a title and surname in the address is appropriate, although certain professors may encourage you to use first names once they reply.
- Not all relationships will come easily. You may need to work to improve relations or take a more proactive role than previously experienced with supervisors. Remember to stay respectful and appropriate but do not be afraid to stand up for yourself.

Relationships within the MCR – building a successful community

- We all need to be aware of the wellbeing of others. This includes being patient and remembering that many people have different backgrounds and may suffer from invisible issues.
- The college environment is an intimate community with shared accommodation. Be aware of the implications of gossip.
- We live in and embrace a multicultural community. Be aware of linguistic, logical, and cultural hurdles that must be overcome on both sides.
- The transition from undergraduate to postgraduate study can be confusing and raise unexpected problems. Do not be afraid to ask for help.

Maintaining Relationships

As a postgraduate student, you may be arriving in Cambridge with a long-term partner. Please remember that the MCR offers an associate member status for members' spouses or live-in partners. As an associate member of the MCR, your partner is welcome at all of our events, even unaccompanied!

Bullying and Harassment

Emmanuel College is committed to providing a safe environment in which all members of the College can participate freely and contribute fully without fear for their personal security and wellbeing. A safe environment free of harassment or threat is fundamental to the academic and social life of our community. **Sexual harassment and sexual misconduct will not be tolerated.** The College will support and assist the victim of any harassment or sexual misconduct.

On the College website (www.emma.cam.ac.uk/about/documents) you will find official documents and policies including:

- Code of Conduct for students regarding harassment, sexual harassment, and sexual misconduct

- College Statement on sexual harassment and sexual misconduct
- College Advice on sexual harassment and sexual misconduct
- Emmanuel College Guidance on, and procedures for handling cases of, sexual harassment or sexual misconduct raised by a student (or students) about another student (or students)

Any criminal behaviour will be reported to police. If you are made to feel uncomfortable by any MCR member, please reach out for help from the committee (particularly the [Welfare Officers](#)). You may also submit a complaint following either the university (www.studentcomplaints.admin.cam.ac.uk/harassment-and-sexual-misconduct) or college (www.emma.cam.ac.uk/about/documents/pdfs/Student%20Complaints.pdf) procedures.

Harassment may include verbal, physical, emotional, and sexual harassment. Sexual harassment may include sexually charged comments or questions as well as physical contact, including sexualized dancing or touching if consent has not been established or is not maintained.

Consent

As well as forming friendships, you may engage in sexual relationships during your time here, either with new partners or in an already established relationship. Even if you are confident that you are informed about consent, it is important that you review this section. It is vital to feel confident and safe with your partner and to always be considerate towards them. Even in established relationships, situations may change. Conversations about consent are important, as they are context-specific and can be complex at times. Below are some key ideas which should be included in this discussion:

Informed

There should be a thorough understanding about what is being asked for and consented to. Consent to sex, for example, is not the same as consent to sex without protection.

Mutual

Consent is communicated between all individuals involved.

Active

Consent should be a continual communication between all involved, and all should feel engaged and involved in this communication. This means that consent is not only a one-time affirmation, but continued and repeated.

Sober/Capable

There are situations in which intoxication means consent isn't possible: when your partner is for example having difficulty speaking or standing. However, everyone has different limits and boundaries, and drunkenness doesn't automatically invalidate consent. The best way to determine if someone consents to sex after drinking is to check in with the person repeatedly to ensure that they're capable of communicating their needs. If there is ever any doubt, confusion, or supposed mixed-messages, don't do it.

Communicated

Use words and actions that are mutually understandable. For all sorts of reasons people might find communicating in a certain way (e.g. verbally) difficult. The method of communication may differ, but the message does not. However, be wary of reading into actions. Neutral behaviour, or not saying no, is NOT consent—consent is *affirmative* (e.g. “yes”).

Retractable

Consenting to one sexual act does not mean consenting to all sexual acts. Consent can also be retracted at ANY time, and any and all sexual acts should be stopped until consent is re-established.

Willing

Agreement can never count as consent if someone is forced. If you agree after being threatened, this is not consent, and any sexual acts following may be considered assault.

Alcohol

It is important to highlight that the MCR is an inclusive, diverse community where we respect everyone's choice whether or not to drink. You don't need to drink to enjoy our events and at formals we offer a discounted price for those not drinking and non-alcoholic alternatives. It is important to be aware of how much you are drinking and speak to someone if you feel things are getting out of control. Remember that you are entirely responsible for your behaviour at all times, even under the influence of alcohol or other substances. Drinks should always be

enjoyed responsibly and know your limits. During MCR events, you can also always reach out to committee members, especially the welfare officers, if you have any concerns.

Sexual Harassment and Assault

The College will support and assist the victim of any sexual harassment or sexual misconduct. In the event of harassment and assault, please refer to the official documents and policies mentioned above (available on the College website www.emma.cam.ac.uk/about/documents). A few key points are highlighted below. In an emergency or immediately following an assault

- Go somewhere that you feel safe.
- If you need the Police or other services, contact them immediately by dialling 999
- The advice provided by Rape Crisis can be accessed at www.rapecrisis.org.uk

In College, the Porters' Lodge will always be a safe place from where you can contact help and assistance. The Porter on duty will contact the Duty Tutor, provide useful telephone numbers, or summon assistance on your behalf.

Who can you contact after an assault?

It can be difficult to talk about an assault to friends or family, yet it is very important to have understanding and support. There are a number of different people you may choose to contact for support and advice. There is no single or correct route by which to seek support.

Within College the following people are available to support and advise you, in no particular order:

- Your Postgraduate Tutor
- Any other Tutor who you wish to approach
- The Senior Tutor
- The Postgraduate Tutor
- The Advisor to Women Students
- The Dean
- The College Counsellor
- The College Nurse
- MCR Women's Officer

The College can assist you, and direct you to, any professional support and counselling services that you may need. Whoever you approach, the matter will be treated sensitively and in confidence. In addition, the Welfare Officers of the MCR at Emmanuel College and the Welfare Officers at Cambridge SU (www.cambridgesu.co.uk/aboutus/team/welfareandcommunityofficer) are people from whom you can seek help and advice.

What can the College do to Support You?

No one should feel that they need to cope on their own, and talking to someone about harassment or an assault is important in and of itself. This is true whether you talk to someone soon after an incident has taken place or at some later date. Whoever you decide to approach in the College, they will direct you to, or provide, the following services, as appropriate to your needs:

- Counselling
- Health advice and treatment (eg. pregnancy and STI screening)
- Support for your general well-being in college
- Adjustments to your academic work and support
- Measures to protect your personal safety
- Providing advice about the complaint procedures available to you
- Respecting your confidentiality
- Helping you to decide whether to approach the Police
- Reporting sexual assault
- Information about sexual assault referral centres
- Other sources of support and advice

Useful Contact Details

Sexual Assault Referral Centres (SARC)

SARCs are specialist 24/7 services for people who have been raped or sexually assaulted. They aim to be one-stop services, providing the following under one roof: medical care and forensic examination following assault/rape, counselling and – in some locations – sexual health services. Services are free of charge and provided to all regardless of gender identity. Most SARCs are able to offer services to anyone including those who do not wish to report the assault to the police ('self referrals').

The SARC for Cambridgeshire at The Elms (www.theelmssarc.org), in Hinchingsbrooke Hospital, Huntingdon and is available 24/7 to victims by calling 0800 193 5434.

For more information and a directory of services, see www.rapecrisis.org.uk/get-help/looking-for-information/sexual-assault-referral-centres-sarcs.

The University - offers advice to students who feel that they are being harassed and to students who are accused of harassment. www.studentcomplaints.admin.cam.ac.uk/harassment-sexual-misconduct

Breaking the Silence - provides information about the support and reporting options available inside and outside of the University. www.breakingthesilence.cam.ac.uk

The Rape and Sexual Assault Support Centre - Provides a free national helpline on 08451 221 331. The helpline is open 12.00–2.30 pm and 7.00–9.30 pm every day of the year, providing support for female and male survivors, partners, family and friends. Support is also available from the Emerald Centre www.emeraldcentre.org

Cambridge Rape Crisis - Box R, 12 Mill Road, Cambridge CB1 2AD. Provides a confidential service of support and information provided over the telephone. www.cambridgerapecrisis.org.uk, 01223 245888

Victim Support - Provides a confidential phone line for support and information on any crime. www.victimsupport.org.uk

NHS - Provides information and advice on help and support after sexual assault www.nhs.uk/Livewell/Sexualhealth/Pages/Sexualassault.aspx

University Counselling Service - Student Services Centre, Benet Street, Cambridge CB2 3PT. Professional counsellors and therapists to whom students can talk in order to work through issues that affect them, www.counselling.cam.ac.uk, 01223 332865

Cambridge SU (Cambridge Students' Union) - Third Floor, Granta Pl, Mill Lane, Cambridge CB2 1RU. Provides information, advocacy, resources and support in understanding your options and going through College and University procedures, www.cambridgesu.co.uk 080816412222, enquiries@cambridgesu.co.uk

Nightline - 21 Jesus Lane, Cambridge CB5 8BQ. Anonymous, confidential helpline run by students for students (Full Term only, 7pm-7am). www.cambridge.nightline.ac.uk 01223 367575

NHS Direct - 24-hour medical advice and information helpline **111**

Police Cambridgeshire - emergencies **999**

The Samaritans (Cambridge Branch) - 4 Emmanuel Road, Cambridge CB1 1JW. Befriending helpline for those in crisis or despair. www.samaritans.org/branches/cambridge 116 126/ 0330 094 5717

International Students

Being an international student in the UK comes with challenges, privileges, frustration and excitement. While things may seem quaintly and traditionally British, Cambridge is also an incredibly international community, from its student societies to the culinary delights of Mill Road. You will, no doubt, find your feet quickly, but in the meantime your International Officer international@emmamcr.org.uk would be glad to answer any questions you might have about your arrival and everyday life in the UK.

International Student Team and iCUSU

The University's International Student Team not only provides support with your visa applications, but also collects important information for all international students (EU and Non-EU). For students due soon in Cambridge please visit www.internationalstudents.cam.ac.uk. Their function as a university service is to assist with any issue related to being an international student in the UK.

Visa

The MCR is not qualified to advise on individual visa issues; contact the College Registrar (college-registrar@emma.cam.ac.uk). Note your visa responsibilities (outlined at www.internationalstudents.cam.ac.uk/student-visa-responsibilities) and expect that you may be contacted by the Tutorial Office about them.

Banking

Soon after arrival, you'll need to set up a bank account in the UK for local transactions. This will be a current account, with a card for withdrawals at

cashpoints (ATMs). A vast majority of the ATMs in the UK do not charge a transaction fee. You'll be able to organise your finances and make payments to other UK accounts through electronic banking.

Some of the closest banks to Emmanuel include Barclays, Santander, HSBC, Lloyds, and Metro but there are many others. Building societies provide most banking services. Check what options they have for international students (often, none), or students in general. Try to find a current account with no fees, or that will let you make withdrawals and transfers without charge from a bank in your home country.

Use the online request form on the Freshers to request a bank letter www.emma.cam.ac.uk/admissions/graduates/freshers/verificationrequests from the College [Tutorial Office](#) **BEFORE** you set up the appointment. Note that different banks will ask for different things. The letter will probably need to confirm that you have a guaranteed place on a course that is longer than six months, and show your address, starting and ending dates – but make sure to check. Please allow 3 to 5 working days for request to be processed.

Set up an appointment with a bank to open an account. Lines will be long during Freshers' Week so try to get there early (~30 min before it opens) to set up the appointment as there will be a limited number of appointment spots per day.

Also, a lot of students opt for online banks such as [Monzo](#) or [Revolut](#)

– there you can convert currencies without charge, and maintaining these cards is also usually free! As well, you can get a single-use virtual card (also for free) to protect online purchases.

Verification Documents

The College can provide you with various verification documents www.emma.cam.ac.uk/life/documents/verification/ (Raven required). Please allow 3 to 5 working days for request to be processed.

Health Care

The National Health Service (NHS) is the UK's state healthcare system providing a wide range of health care services including doctor's appointments, hospital treatment and dental care: www.studentwellbeing.admin.cam.ac.uk (Raven required).

EU nationals and Tier 4 visa holders are entitled to receive certain treatment from the NHS free of charge in General Practitioner (GP) Surgeries, health care centres,

and hospitals. This applies to your spouse and children if they are in the UK as your visa dependants.

Non-UK European Economic Area (EEA) nationals and their family should obtain a European Health Insurance Card (EHIC) before coming to the UK.

You must register with a Cambridge doctor (GP) as soon as you arrive in Cambridge. You can find a list of local practices on the College website (www.emma.cam.ac.uk/admissions/graduates/freshers).

You will need to pay for dental treatments as well as for any associated medical prescription to be collected from a pharmacy; dental problems are not only a pain in the mouth but also in the pocket. Students wishing to register as an NHS dental patient locally can find out which practices in the city are accepting NHS patients using the NHS search facility (www.nhs.uk/Service-Search/Dentist/LocationSearch).

The College also has a nurse who is available during term time to offer advice to students (nurse@emma.cam.ac.uk). For further details about the full range of medical support available within College, ask at the Porters' Lodge (01223 334 200).

If you are living on site and require urgent emergency medical assistance and are unable to travel to the hospital contact the Porters' Lodge immediately and the duty Porter will call for an ambulance and then attend regarding first aid if needed. If living in offsite accommodation call 999 and then call the Porters' Lodge to inform the duty Porter.

Phones

Almost all the major phone companies will provide you with a pay-as-you-go SIM card for free, which you can top up as you need. Nearby Emmanuel, you can check out options at mobile stores like the [Carphone Warehouse](#), or individual carriers like [Three](#), [Vodafone](#), [EE](#), [O2](#). Mobile phone contracts are available but often require credit history. A popular alternative for both PAYG or contract options is to use online mobile companies like [Giffgaff](#) or [Talkmobile](#), which send you your SIM card by mail. Bring along an unlocked phone, insert the SIM card, and you should be good to go.

Religion

Emmanuel welcomes anyone, regardless of religious affiliation. Listed below are a few places within and near college that may be of interest.

Emmanuel Chapel

The Chapel is located straight in front of you as you come through the main College gate. There are services each Sunday, Wednesday and Thursday evenings led by the Dean, The Revd Jeremy Caddick (jlc24@cam.ac.uk) — see www.emma.cam.ac.uk/chapel. All members of Emma and their friends are welcome. If you are interested in reading in chapel services then get in touch with the Dean, who is always happy to have more volunteers.

Reflection Room

There is a multi-faith reflection room that is open to anyone for quiet prayer and contemplation, located in Emmanuel House.

Additionally, there are several religious organizations within Emmanuel College and in the university. We've listed a few below, but all registered religious societies at the University of Cambridge can also be found at www.cambridgesu.co.uk/organisation.

Christian Graduate Society: www.cucgs.soc.srcf.net

Islamic Society: www.isoc.co.uk/freshers

Jewish Society: www.cambridgesu.co.uk

Sustainability

In 2017, Emma was awarded the Gold Award from the Green Impact initiative. We hope you will continue in our efforts to make Emma an eco-friendly place! Here are some tips:

REDUCE

- Don't want unwanted ads in your pigeon-hole? There's an envelope with green stickers on the board inside the pidge! Put a green sticker next to your name!
- Don't forget to switch-off lights and unplug devices to minimise energy consumption.

- Report any faults (i.e. leaky taps, faulty radiators, etc) through Emma’s online maintenance form.



REUSE

- Grab an Emma Green Duck shopping bag from The Porters’ Lodge.
- **Buy an Emma inscribed reusable Keep Cup from the Cafeteria or Fiona’s and get 10% off of every hot drink you get using the cup in the College!**

RECYCLE

Cambridge is pretty great for recycling, and can handle many materials other places do not. See www.cambridge.gov.uk/bins-rubbish-and-recycling for details, including collection dates.

All student accommodation should have recycling bins, notify the Accommodation Officer otherwise at: accommodation@emmamcr.org.uk.

Computing

University Information Services (UIS)

Visit www.help.uis.cam.ac.uk/service/email for all things related to your university email address. The university email service is called Hermes and is provided by Microsoft Outlook.

CRSid

Every Cambridge student is provided with a University email address (e.g. abc123@cam.ac.uk). The prefix part of the address (in this case, abc123) is your CRSid. The CRSid together with the UIS password are used to identify you to various services throughout the University.

Raven

When trying to access any of the university services you’ll be redirected to the *Raven* login system to input your CRSid and UIS password www.legacy.raven.cam.ac.uk/

Before arrival, you will need to collect your account details. You can collect your CRSid and initial password for Raven by completing the online form once you

have completed student registration (see www.help.uis.cam.ac.uk/new-starters/it-for-students/getting-started for more information). Make a note of your initial password. Once you have collected your initial password, use it to log in to the UIS Password Management Application (www.password.raven.cam.ac.uk/) and create your own UIS Password. Your CRSid and this newly created UIS password will be everything you need to access any of the university services.

Make sure to check your email regularly, as all official communications from the University will be by email. In the run-up to the start of term, the MCR Committee will begin emailing you with helpful information and details of Freshers' events.

Connecting your own Computer

You will likely need to use computer facilities during your time at Emma. Most people bring a laptop, and we strongly recommend you do. There is excellent high-speed internet connectivity in Cambridge. There is internet in college accommodations (eduroam). This is available to all Emma students throughout the College and covers much of the city. Wired access points are provided in the Library and MCR. The college also provides a guide to connecting, and committee members will host a walk-in session during Freshers' week for computing access. If you have any special computing software or equipment needs, there are funds available to help. Please contact the Computer Officer (computing@emmamcr.org.uk) to discuss your needs in confidence.

Set up and use Eduroam

To set up eduroam it is essential to first retrieve your username (your eduroam identifier) and password (your Network access token) from UCS Tokens (tokens.uis.cam.ac.uk). You will be first redirected to the Raven login system to input your CRSid and UIS password. More information can be found at help.uis.cam.ac.uk/service/wi-fi

College Wi-Fi and Computers

For coverage across Cambridge, eduroam is your best bet. Other off-site college accommodation has specific connections, for which the password is **EmmaDucks9** if not posted within the building as something else.

The college has three computer rooms that are open 24 hours a day (access with university card) and have a range of modern PCs. There are printing, scanning facilities and photocopying facilities in the foyer of the library and in the Robert

Sansom student computer room. There are also two computers and printing facilities in the MCR, reserved for the use of MCR members.

Important Websites

College website (www.emma.cam.ac.uk)

This contains a wealth of information about life at college, including welfare, accommodation, and useful contact details. Book for Formal Hall, request maintenance, or view today's menu from Catering. All the official documents are at www.emma.cam.ac.uk/about/documents

MCR website (www.emmamcr.org.uk/wp/about)

This contains some additional information about life at college, including welfare, accommodation, useful contact details and the calendar of upcoming events. Raven login needed for certain features. The website is used to sign up for the many events we have throughout each year.

Freshers' website (www.emma.cam.ac.uk/admissions/graduates/freshers/)

This contains all information for Freshers'

Mailing lists

The MCR has a general mailing list emmamcr-all@srcf.net, featuring a weekly bulletin and announcements from the Committee. Official election business and MCR constitution changes are sent via emmamcr-official@srcf.net

Sport and other Activities

If you enjoy sports, music, or anything in between, you will find that between the University and College teams/orchestras/societies and the MCR activities there's a lot on offer. It doesn't matter whether you want to train for hours every day or just play for fun, there's something for everyone!

The University offers pretty much every sport going, from football to real tennis, water polo to ice hockey. The focal point of University club's season is the annual varsity match against Oxford, but throughout the year teams compete at a high level in both regional leagues and the British Universities & Colleges Sport competitions (BUCS). Some sports may require you to attend trials in order to gauge your ability, while others take complete beginners. Check out www.sport.cam.ac.uk to see the list of sports on offer.

As a member of the MCR you are eligible to join the University's Fitness Centre, located in West Cambridge. Details about the facilities and signing up can be found at www.sport.cam.ac.uk. In addition, there is an Emmanuel College Fitness Suite, details below. Emma also has its own sports grounds on Wilberforce Road and has an excellent Boathouse and novice training program for rowing. A big selection of sports clubs, open to all levels are available within the College.

For the musically minded, a variety of ensembles are provided by the Cambridge University Music Society, www.cums.org.uk, including concert and symphony orchestras and several choirs. Most of these are entry by audition only but there is also a range of university-wide musical societies open to all abilities. There is the College Choir for those who wish to audition and also a non-audition chorus, orchestra, big band and folk ensemble that put on concerts once a term. The Emmanuel College Music Society website has more details www.emmamusic.co.uk.

For other interests — acting, comedy, juggling — there's almost certainly a group or society already existing for you to join. For a full list of all registered University societies, see www.societies.cam.ac.uk.

For more information about societies, head along to the University Freshers fair and the Emmanuel Freshers fair. For more information visit the ECSU website (www.ecsu.org.uk) where you can see all the College societies on offer.

Frank Needham Windsor

This fund provides financial support for specific ('sweaty') sporting endeavours at College or University level. Grants are made of up to 50% of costs (up to a maximum of £250 per year). Applications are made through Tutors, throughout the academic year, by filling in an [application form](#) (Raven required). Grants are decided by the Windsor Committee.

NB: For 'non sweaty' sports College may provide funding on occasion. For advice, ask your Tutor.

College Sports Facilities

The Fitness Suite

The Fitness Suite is located at 22 Parkside, adjacent to the College and Parker's Piece. The entrance is downstairs into the basement. This gym is for the exclusive use of Emmanuel students. There are men's/women's changing rooms, showers,

bathrooms, a cardio room (2 treadmills, 2 ergs, 2 bikes), a weight room (a variety of machines), and a callisthenics room (light weights, stretching aids, and mats).

There are some important rules for users of the fitness suite:

1. Only inducted members of the College may use the Fitness Suite.
2. **Never go to the gym alone.** There is not an attendant present.
3. Wear proper gym attire (includes trainers), no muddy footwear in the gym.
4. Don't blast music; keep headphones on.
5. Gym hours are 7am-9am and 10am-10pm.
6. Report machine breaks to the Bursar (bursar@emma.cam.ac.uk) or to the Sports Officer (sports@emmamcr.org.uk)
7. Complete Fitness Suite Induction www.emma.cam.ac.uk/filestore/file=students\FitnessSuiteInduction.pdf and contact the Sports Officer (sports@emmamcr.org.uk)

Once you have completed an induction and filled out some forms, your university card will be activated and will allow you to use the facilities. There will be an induction conducted during Freshers' Week. If you miss the inductions, contact the Sports Officer to schedule a time. You can find detailed information here:

www.emma.cam.ac.uk/supporting/impact/buildings/?id=6. Safety instruction can be found in the Health and Safety Handbook (at www.emma.cam.ac.uk/about/documents).

The Sportsground

The College Sportsground, a 12 acre site on Wilberforce Road near Grange Road, consists of 2 football pitches, 1 rugby pitch, 9 tennis courts (3 newly-laid hardcourts and 6 grass courts), 1 cricket pitch and 2 netball courts. The Sportsground also includes changing rooms. Students are welcome to use these facilities, but they should first check with the Head Groundsman, Mark Robinson, using groundsman@emma.cam.ac.uk or on 01223 353961. (Sports team captains will do this for organised training sessions and matches.)

The Boathouse

The Emmanuel College Boat Club's rowing boats and up to 8 postgraduate students live in the boat house (also called Cutter Ferry), and that is where the club has its gym. The gym is available exclusively to members of the Boat Club who have been inducted. You will get the chance to sign up for the Boat Club during

the Freshers' Fair or a little later during the year (contact the rowing club captain or your sport officer for more information).

Swimming Pool

Emmanuel College has an outdoor swimming pool. The pool is in the Fellows' Garden and is open from the beginning of Easter Term (mid-June) until the end of August. Opening hours are 6.30am-9am and 12:30pm-7pm, 7 days a week.

Squash Courts

Emma has 2 very nice, recently refurbished squash courts situated on the College site. There is a booking system at Porters' Lodge and online www.emma.cam.ac.uk/life/facilities/roombooking and you can borrow rackets from the Porters' Lodge or from the MCR.

Tennis Courts

From Easter term until May week, there will be tennis courts set up in the Paddock (grass court) with a real net and some lines. Rackets and balls can be borrowed from the Porters' Lodge.

Other Sports Equipment

Frisbee, croquet, rounders, badminton, baseball, football, climbing ... equipment may be borrowed from Porters' Lodge or found in the college kit room! Parker's Piece which is next to Emmanuel College is a great open area to practise all sorts of team sports for free. Get in touch with the relevant college sports club before borrowing some equipment or for more information. Only croquet and tennis are permitted on the Paddock.

Cambridge Life

Cambridge has plenty of good pubs and nice cafes for you to explore. The pubs do high quality, affordable food, and the cafes a selection of pastries. Beyond that the city is full of cultural goings on, and beyond the city limits are cycle routes, National Trust properties and a selection of picturesque villages.

Pubs and Drinks

Near Emma - [The Clarendon Arms](#), [The Grain & Hop Store](#), [The Free Press Pub](#), [The Elm Tree](#), [The Champion of the Thames](#) (pub quiz), [The Regal \(Wetherspoons\)](#)

Mill Road - [Cambridge Blue](#), [The Devonshire Arms](#), [The Alex](#) , [The Earl of Beaconsfield](#) (regular live gigs), [The Empress](#) (Cambridge's best pub quiz), [196](#) (Mill Road)

Town Centre - [The Cambridge Brewhouse](#) , [The Eagle](#) (of DNA fame), [The Bath House](#) , [The Pint Shop](#) (beer & gin), [The Anchor](#), [The Mill](#), [The Granta](#) (riverside patio), [The Maypole](#).

Medium-Distance - [The Fort St George](#) (Midsummer Common), [The Alma](#) (pub quiz), [The Old Spring](#), [The Boathouse](#), [The Burleigh Arms](#) (near Barnwell),

Cocktails - [The Green Man](#) (Grantchester), [The Green Dragon](#) (Chesterton), [The Plough](#) (Fen Ditton), [All Bar One](#) (Milton Keynes), [Las Iguanas](#), [Tabouche](#), [La Raza](#), [Baroosh](#), [Browns](#), [Novi](#), [2648](#) .

Coffee

Near Emma - [Fiona's Emmanuel College](#), [Savino's](#) , [Bould Brothers](#), Caffè Nero, [Espresso Library](#), [Arts Picturehouse](#) (also movies), Trockel Ulmann & Freunde

Town Centre - [Whale Café](#), [Indigo Coffee House](#), [Espresso Lane Cafe](#) , [The Grad Cafe](#) in the University Centre, [Fitzbillies](#) (+cakes), [Aromi](#), [Charlie's Coffee Company & Pizzeria](#).

Mill Road - [Hot Numbers](#), Black Cat [Black Cat Cafe](#) , [Limoncello](#), [Relevant Record Café](#).

Restaurants

Near Emma - [Wagamama](#), [Pizza Express](#), [Zizzi](#), [The Cricketers](#), [Baan Thai](#), [Seven Days](#), [Nandos](#), [Tiffin Truck](#)

Town Centre - [The Rainbow Café](#), [The Cambridge Chop House](#), [Butch Annie's](#) (best burgers), [Charlie Chan](#), [Kymmoy](#).

Mill Road - [Bibimbap House](#) (Korean), [Curry Queen](#) (Indian), [Rockers](#) (Steaks and Burgers), [Al Casbah](#) (Algerian), [Damas Bridge](#) (Syrian), [The Sea Tree](#) (Fish), [Bedouin](#) (North African)

Cheap Eats - [Emma Hall](#), [Nanna Mexico](#), [Michaelhouse Café](#), [Carlos BBQ](#) (Turkish), [North China Dumplings](#), [Indigo Coffee House](#), KFC, [Popeyes Cambridge](#) and wide selection of worldwide food in Market Square.

Places to Visit and Things to Do

[Cambridge University Botanic Garden](#) - Free entry for Cambridge students. Lovely gardens, nice all year round for a stroll or picnic.

[Fitzwilliam Museum](#) – founded in 1816, the art and antiquities museum of the University of Cambridge. Look out for the special exhibits.

Other museums, all free: www.museums.cam.ac.uk,
www.visitcambridge.org/place-categories/museums-galleries/

Big concerts and comedy - Check out the [Corn Exchange](#) and [Cambridge Junction](#)

Theatre and comedy - [The ADC Theatre](#), [The Corpus Playroom](#), [Mumford Theatre](#)
[Cambridge Arts Theatre](#).

Cinema - [Vue](#), [Light](#), [Picture House](#)

Classical music - [West Road Concert Hall](#), [ECMS](#) recitals (in college every Sunday!)

Punting - A classic Cambridge pastime. You can hire punts from [Scudamore's](#) with a student discount or make friends from one of the colleges with punts.

[Nice places for a walk](#)

Cambridge - Midsummer Common and down the river, down Mill Lane to Coe Fen and more river, along to Grantchester Meadows.

Ely - A city the size of a village. Beautiful Cathedral, Oliver Cromwell's House, Peacocks Tearoom or the Almonry Tea Room for a drink or a bite to eat. A long walk or a 15 min train.

[Anglesey Abbey](#) and [Wimpole Estate](#) - Both [National Trust](#)
[Grantchester](#) - An idyllic little village a 40 min walk from Emma.

[London](#) - All of the delights of London are just a 50min train ride away
www.visitengland.com/things-to-do/cambridgeshire – more things to do in
Cambridgeshire

Useful Websites:

Staying on top of things. There are a number of Facebook groups and websites you really want to visit on day one of your Cambridge experience.

- Emmanuel College MCR Facebook Group!!! Most events in Emma are posted in this Facebook group www.facebook.com/groups/emmamcr/
- For all info on May Balls, June events and Garden Parties, visit www.whichcambridgecollege.com/balls/
- Talks happening in Cambridge: www.talks.cam.ac.uk
- Check out what is happening at the Anglia Ruskin hang-out site the Junction for
- amazing comedy, music, etc. www.junction.co.uk
- Check out who is visiting the Corn Exchange www.cambridgelive.org.uk/cornex
- Cambridge Tab www.thetab.com/uk/cambridge/ for the latest scandals and updates on Cambridge
- Cambridge Union Society for a whole bunch of amazing speakers and other events www.cus.org/
- Useful information for Freshers' www.emma.cam.ac.uk/admissions/graduates/freshers/

Back cover Photo by Sarah Rawlinson

Notes:

Notes:

