



Spring 2014

www.emma.cam.ac.uk/members/emmanuel-soc (01223) 762792 emmanuel-society@emma.cam.ac.uk

WHAT'S ON AND HOW TO BE THERE

The Emmanuel Society enables Members of the College to keep in touch with each other and with the College, and to help Emmanuel benefit from Members' experiences and talents. Fundraising is not part of its activities. PLEASE BOOK FOR FORTHCOMING EVENTS ONLINE OR USE THE BOOKING FORM IN NEWSLETTER AS FLYERS WILL NOT BE SENT OUT.

EVENTS IN COLLEGE

Cricket – Friday 13 June 2014

Who needs test cricket when you can see Old Emma play the College at Wilberforce Road on Friday 13 June with a start at 11.30am?

The match is followed by a dinner in College to celebrate Old Emma captain David Lowen's 50 years of cricket at Emmanuel.

If you would like to play this year or in future years or enjoy the celebration dinner in the Robert Gardner Room then email emmanuel-society@emma.cam.ac.uk.

Garden Party – Saturday 19 July 2014

The College will be celebrating the 100th anniversary of the opening of North Court with a garden party on Saturday 19 July from 2.30pm.

The Fusiliers were the first to occupy the rooms at the start of the First World War and we are delighted that they will be represented. In addition, the army is providing a military band. Other entertainment will include an 'explosive' Mad Science show, bouncy castles, swimming and garden games for all ages.

For teenagers, Dr Nicholas White (2002), Fellow in French, will give a talk about French literature in the years running up to the First World War.

Guests will be given the opportunity to look around the newly refurbished North Court rooms and there will be an exhibition in the Library.

Period dress welcome!

COST: We have increased the age for which children can attend at no cost to 16 in the hope that even more Members will bring their children to make it a real family event.

£25/HEAD and free for children aged 16 and under

BOOK BY: FRIDAY 4 JULY: FORM ATTACHED OR ONLINE AT www.emma.cam.ac.uk/members/events

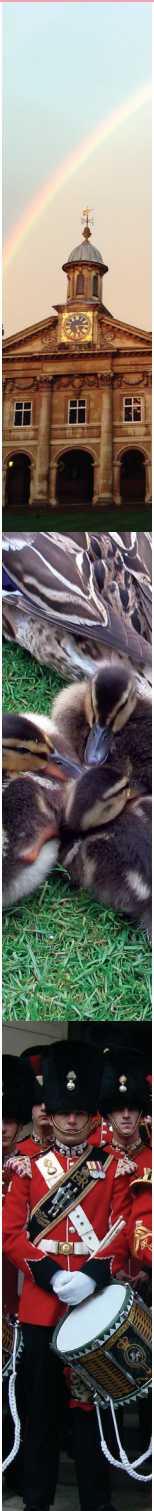
Graduate Talks

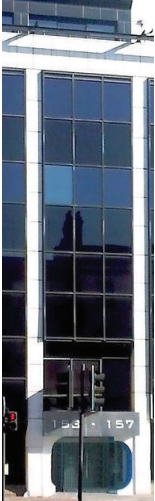
Graduate students give talks throughout the year. Many are arranged at short notice, but the Office will send an email to those interested in attending. Register your interest on the booking form attached.

EVENTS IN LONDON

Lavender Hill Studios – Thursday 29 May 2014

Join the Emmanuel Society for an evening of fine art and fabulous conversation. Lavender Hill Studios welcomes Members into the artists' studio for a live portrait painting demonstration – the Master will be the subject – against a backdrop of art materials and worn wooden floors. Enter a world of beauty and watch as Ann Witheridge, co-founder of the Studios and Cambridge graduate, captures the model on canvas. You will have the chance to ask questions as the process unfurls and Ann will talk her audience through the key points of interest. There will be plenty of time before and after for catching up over wine and canapés, and for those keen to try their hand there will be the opportunity to do so afterwards.





Drinks will be served from 6.30pm. The portrait painting demonstration will start at 7pm and afterwards there'll be more drinks and canapés.

Lavender Hill Studios were founded in 2004 and are the first atelier in the UK. They are home to an exceptional community of figurative artists training in traditional oil painting techniques. See www.lavenderhillstudios.com

The Studios are located within the Battersea Business Centre. Use tube to Clapham Common or rail and overground links to Clapham Junction and Queenstown Station. The 87, 77, 156 and 345 buses stop in front of the school and Boris Bikes have recently been installed on Lavender Hill. There is also limited parking at the Centre, which must be booked in advance. The Studios are accessible to wheelchair users.

COST: £17.50/HEAD

BOOK BY: FRIDAY 16 MAY; FORM ATTACHED OR ONLINE AT www.emma.cam.ac.uk/members/events

Emma Business Forum

Thank you to all who have been in touch to register their interest and put forward ideas for the Emma Business Forum. We have evidence of a vibrant Emma entrepreneurial community.

An *Emma Business Forum* Linked-In subgroup to the *Alumni of Emmanuel College Cambridge* Linked-In group has been set up, so please join to share basic contact details, skills and information about business and entrepreneurial activities.

We are planning two complementary events that respond to the range of topics suggested and look forward to sparking more discussions amongst Emma entrepreneurs and investors this summer. Both events will focus on networking, fuelled by food and drink and supported by topic pinboards and informal 'Ask me about' badges. The discussions will be led by a series of short presentations, but steered by the participants and we will be in touch with all those who have contacted us so far to invite them to play an active role.

There will be opportunities for everyone to join in but please tell us beforehand what you'd like to say or find out so that we can

plan ahead and make sure all the topics of interest are covered.

Please help us to establish the Business Forum by emailing the Emmanuel Society Office, emmanuel-society@emma.cam.ac.uk to provide your contact information and details about your key areas of interest so that we can plan to meet demand. Those who attended the Secrets of Entrepreneurship event in May 2013 will receive an email inviting them to participate. Please also let us know if you would be willing to lead discussions on specific issues. Topics requested so far include start-up strategies, recruiting, growing/scaling a business and growing business abroad. Can anyone offer a seminar room in their London office as a venue for Forum meetings?

We are grateful to our hosts for generously providing the venues for these events; the small cost is to cover the catering.

Start-up Strategies – Thursday 5 June 2014

Hosted by Made by Many <http://madebymany.com/> in their stunning warehouse space at Diespeker Wharf, N1 8JX, overlooking the Regent Canal from 7pm to 9.30pm, this event will focus on start ups: strategies for investment, collaboration, innovation and marketing.

Speakers will include Tim Malbon from Made by Many, Luke Razzell (1990) <http://weaverdigital.com/> and Damian Crowther (1986) www.floceleris.com.

COST: £15/HEAD

BOOK BY: FRIDAY 30 MAY; FORM ATTACHED OR ONLINE AT www.emma.cam.ac.uk/members/events

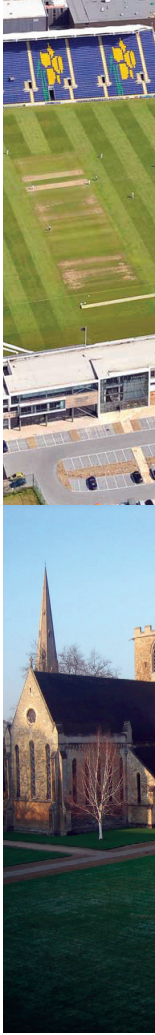
Social Enterprise – Wednesday 9 July 2014

Our venue is Tower Hamlets' pioneering new secondary Free School, Wapping High School, E1 2DA, <http://www.wappinghigh.org/>. There will be opportunities to tour the school and talk to Kerstyn Comley, one of its founders.

The event, from 6.30pm to 9pm, will consider the challenges of social enterprise in today's business landscape with speakers David Keighley (1970) <http://mindfulpolicygroup.com/>, and Rosa Escoda (2005) <http://lovecoldbrew.com> and Amy New (2003) <http://www.macmillan.org.uk/>.

COST: £15/HEAD

BOOK BY: FRIDAY 27 JUNE; FORM ATTACHED OR ONLINE AT www.emma.cam.ac.uk/members/events



City Drinks – Tuesday 16 September 2014

The annual City Drinks event will once again take place in The Wine Tun, 2-6 Cannon Street, London, EC4M 6XX from 6.30pm. There is no need to book and do encourage College friends to come along with you.

FUTURE EVENTS

Booking details will be in a later newsletter

Wales Dinner – 17 October 2014

The Society will host a dinner at SWALEC cricket ground in Cardiff on Friday 17 October.

History Day & AGM – Saturday 15 November 2014

The Society will hold a History Day in College on Saturday 15 November, with talks from Fellows in the morning and visits to the chapels of Emma, Christ's, Sidney and Jesus in the afternoon of music and architecture with John Bryden (1965). The Emmanuel Society AGM will be held on the same day.

Cruises – New Benefits for Members

The Society's arrangements have been revised so that Members receive a discount of 5% of the booking fee and the Society

receives donations of 10% of the booking fee for each booking made with Swan Hellenic (www.swanhellenic.com), Voyages of Discovery (www.voyagesofdiscovery.co.uk) and Hebridean (www.hebridean.co.uk). Bookings must be made by calling 0800 9875139 (Monday-Friday 9.00am-17.30pm) and quote booking code EMMA.

There are two cruises that may be of special interest to Members. Dr Chris Whitton, College Fellow in Classics, will be speaking on Swan Hellenic's Diamond Anniversary Cruise around the Black Sea from 13 to 27 August 2014 (MIN 140813), and Honorary Fellow Professor David Drewry will be speaking on Voyages of Discovery's East Africa & Indian Ocean tour from 18 December 2014 to 3 January 2015 (VOY 141218).

PLEASE LET THE SOCIETY KNOW IF YOU MAKE A BOOKING WITH ANY OF THESE COMPANIES AND ENSURE THAT THE CODE IS QUOTED. PLEASE GIVE YOUR BOOKING REFERENCE AND CRUISE NUMBER ON THE BOOKING FORM.



EVENTS BOOKING FORM

If you would like to attend any of these events, please complete and return this booking form to the Emmanuel Society Office, Emmanuel College, Cambridge, CB2 3AP, with your total payment. Cheques should be made payable to the Emmanuel Society. Please let the Emmanuel Society know if you would like a receipt. Please note that refunds will not normally be made for cancellations received within 7 days of the event. There is limited student guestroom accommodation available in College overnight: to book please phone 01223 334255 or go to www.emma.cam.ac.uk/guestrooms. Limited parking will be available to those spending the night in College.

Name: _____

Address: _____

Telephone Numbers: Home: _____ Work: _____ Mobile: _____

Email: (Please write very clearly) _____

Signed: _____ Date: _____

Date: **Thursday 29 May 2014**

Event: **Lavender Hills Studios** or book online at www.emma.cam.ac.uk/members/events/

Cost: £17.50/head

Closing Date: Friday 16 May 2014

I would like to book: _____ place(s) for Lavender Hills Studios @ £17.50/head

Date: **Saturday 19 July 2014**

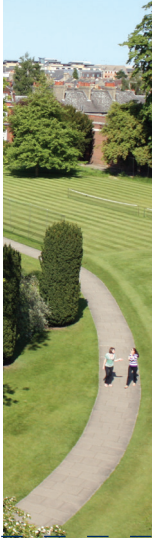
Event: **Garden Party** or book online at www.emma.cam.ac.uk/members/events/

Cost: £25.00/head

Closing Date: Friday 4 July 2014

I would like to book: _____ place(s) for the Garden Party @ £25.00/head and _____ place(s) for children 16 and under (no charge)

Name of guest(s): _____



CAREERS

Careers Speed Dating

The Emmanuel Society, ECSU and the MCR held a successful careers speed dating session in College on Thursday 27 February.

More than 30 students got the chance to chat with 11 Members about career options ranging from the more traditional including banking, teaching, law and and management consultancy to the joys of charity work, computer gaming, biotech start-ups and satellite telecoms. Many thanks to everyone who made the event possible.

Future Careers Events – Can You Help?

The next careers event is a job hunting workshop scheduled for the evening of Tuesday 28 October. This is a very practical event, where students can bring a copy of their CV for (brief) review and get advice on applications and interview skills. Previous workshops have been enthusiastically received by the grads and undergrads trying to forge a future after their studies.

If you are willing to help and have experience in trawling through CVs or interviewing candidates,

whether in an HR role or as part of your broader responsibilities, we'd love to hear from you.

Please contact emmanuel-society@emma.cam.ac.uk.

Careers Database

www.emma.cam.ac.uk/careers

Even if you can't make the trek back to College for a specific event, you can still help Emmanuel students with careers advice by adding your details to the Emmanuel Careers Database.

Join more than 750 Members by adding or updating your entry here:

www.emma.cam.ac.uk/careers.

Do sign up even if you graduated relatively recently, as advice on applications, surviving interviews and getting started in a new job can all be really valuable.

FOLLOW US

- www.facebook.com/EmmanuelCambridge
- www.twitter.com/EmmaCambridge
- www.linkedin.com – 'Alumni of Emmanuel College' group page
- plus.google.com/ search for 'Emmanuel College page' and add to circles

Date: **Thursday 5 June 2014**

Event: **Start-up Strategies**

Cost: £15.00/head

Closing Date: Friday 30 May 2014

or book online at www.emma.cam.ac.uk/members/events/

I would like to book: _____ place(s) @ £15.00/head

Area of interest: _____

Date: **Wednesday 9 July 2014**

Event: **Social Enterprise**

Cost: £15.00/head

Closing Date: Friday 27 June 2014

or book online at www.emma.cam.ac.uk/members/events/

I would like to book: _____ place(s) @ £15.00 each

Area of interest: _____

Date: **Various**

Event: **Cruises with Swan Hellenic, Hebridean Cruises and Voyages of Discovery**

Details: Please ensure that the code EMMA is quoted when booking and let the Society know if you make a booking with any of these companies. Also fill out your booking reference and cruise number on the form below.

I have booked a cruise with Swan Hellenic/Hebridean/Voyages of Discovery (please delete as appropriate)

My booking reference is: _____

My cruise number is: _____

Expressions of interest:

Various dates

Graduate Talks

YES/NO

All data are securely held in the College Development Office and will be treated confidentially and with sensitivity for the benefit of Emmanuel College and its associated trusts, and of its members. Selected data are available to Cambridge University, and occasionally to the Emmanuel Society and volunteers, College Clubs, and agents contracted by the College for specific Member-related projects. The data are used for a full range of activities for members, including the sending of publications, the promotion of benefits and services available to members and notification of events held for members. Data may also be used in fund-raising programmes. Under the terms of the 1998 Data Protection Act you have the right to object to the use of your data for any of the purposes.

